

Product datasheet for **TA308692**

Natriuretic Peptide Receptor C (NPR3) Rabbit Polyclonal Antibody

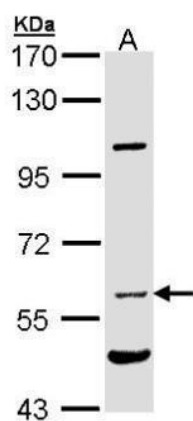
Product data:

Product Type:	Primary Antibodies
Applications:	IF, IHC, WB
Recommended Dilution:	ICC/IF:1:100-1:1000; IHC:1:100-1:1000; WB:1:5000-1:20000
Reactivity:	Human (Predicted: Rat, Xenopus)
Host:	Rabbit
Isotype:	IgG
Clonality:	Polyclonal
Immunogen:	Recombinant protein fragment contain a sequence corresponding to a region within amino acids 265 and 514 of NPR-C
Formulation:	1XPBS, 20% Glycerol (pH7). 0.01% Thimerosal was added as a preservative.
Concentration:	lot specific
Purification:	Purified by antigen-affinity chromatography.
Conjugation:	Unconjugated
Storage:	Store at -20°C as received.
Stability:	Stable for 12 months from date of receipt.
Predicted Protein Size:	60 kDa
Gene Name:	natriuretic peptide receptor 3
Database Link:	NP_000899 Entrez Gene 25339 Rat Entrez Gene 4883 Human P17342
Background:	The family of natriuretic peptides (see MIM 108780) elicit a number of vascular, renal, and endocrine effects that are important in the maintenance of blood pressure and extracellular fluid volume. These effects are mediated by specific binding of the peptides to cell surface receptors in the vasculature, kidney, adrenal, and brain. [supplied by OMIM]
Synonyms:	ANP-C; ANPR-C; ANPRC; C5orf23; GUCY2B; NPR-C; NPRC
Note:	Seq homology of immunogen across species: Rat (96%), Xenopus laevis (82%)
Protein Families:	Druggable Genome, Transmembrane

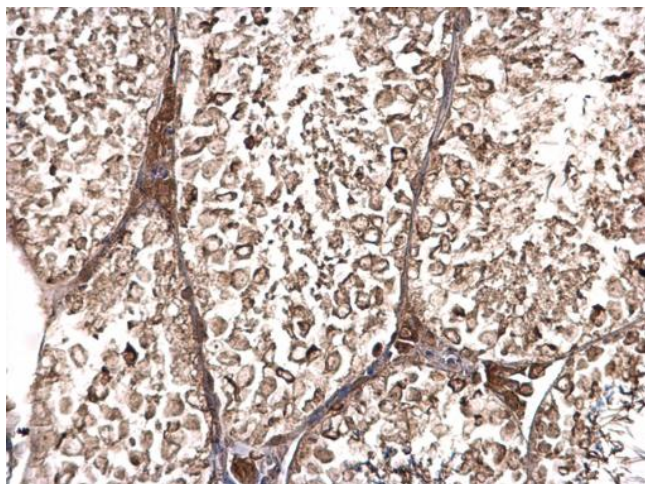


[View online »](#)

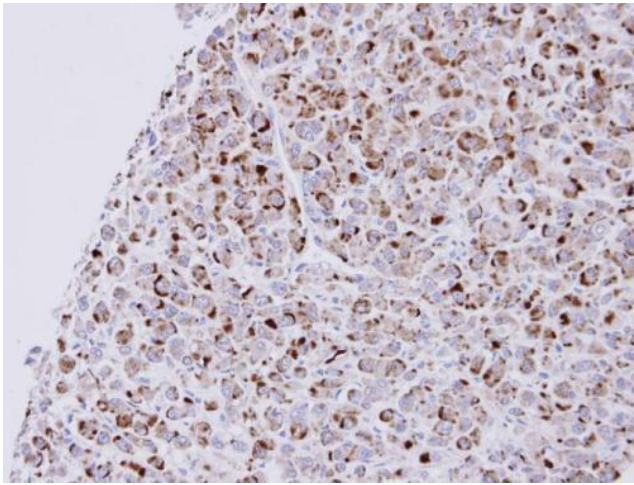
Product images:



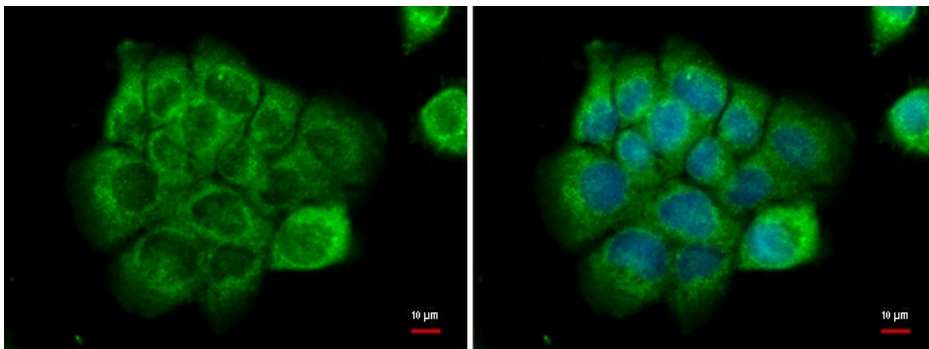
Sample (30 ug of whole cell lysate). A: Hep G2. 7.5% SDS PAGE. TA308692 diluted at 1:10000



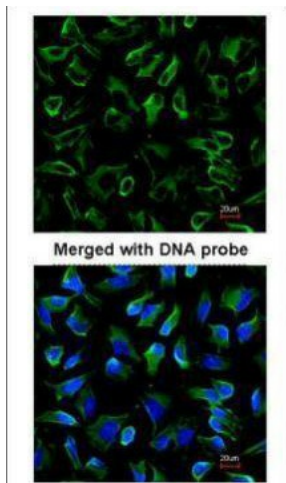
NPR-C antibody [N3C3] detects NPR-C protein at cytosol on mouse testis by immunohistochemical analysis. Sample: Paraffin-embedded mouse testis. NPR-C antibody [N3C3] (TA308692) dilution: 1:500.



Immunohistochemical analysis of paraffin-embedded U87 xenograft, using NPR-C (TA308692) antibody at 1:500 dilution.



NPR-C antibody [N3C3] detects NPR-C protein at cytoplasm by immunofluorescent analysis. Sample: A431 cells were fixed in ice-cold MeOH for 5 min. Green: NPR-C protein stained by NPR-C antibody [N3C3] (TA308692) diluted at 1:500. Blue: Hoechst 33342 stain



Immunofluorescence analysis of paraformaldehyde-fixed HeLa, using NPR-C (TA308692) antibody at 1:200 dilution.