

Product datasheet for **TA308690**

CTBP1 Rabbit Polyclonal Antibody

Product data:

Product Type:	Primary Antibodies
Applications:	IF, WB
Recommended Dilution:	ICC/IF:1:100-1:1000; WB:1:500-1:3000
Reactivity:	Human (Predicted: Rat, Rhesus Monkey, Mouse)
Host:	Rabbit
Isotype:	IgG
Clonality:	Polyclonal
Immunogen:	Recombinant fragment corresponding to a region within amino acids 194 and 379 of CtBP1 (Uniprot ID#Q13363)
Formulation:	0.1M Tris, 0.1M Glycine, 10% Glycerol (pH7). 0.01% Thimerosal was added as a preservative.
Concentration:	lot specific
Purification:	Purified by antigen-affinity chromatography.
Conjugation:	Unconjugated
Storage:	Store at -20°C as received.
Stability:	Stable for 12 months from date of receipt.
Predicted Protein Size:	48 kDa
Gene Name:	C-terminal binding protein 1
Database Link:	NP_001012632 Entrez Gene 13016 Mouse Entrez Gene 29382 Rat Entrez Gene 1487 Human Q13363
Background:	This gene encodes a protein that binds to the C-terminus of adenovirus E1A proteins. This phosphoprotein is a transcriptional repressor and may play a role during cellular proliferation. This protein and the product of a second closely related gene, CTBP2, can dimerize. Both proteins can also interact with a polycomb group protein complex which participates in regulation of gene expression during development. Alternative splicing of transcripts from this gene results in multiple transcript variants. [provided by RefSeq]
Synonyms:	BARS

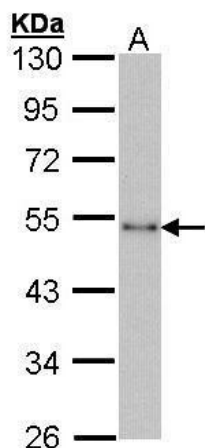


[View online »](#)

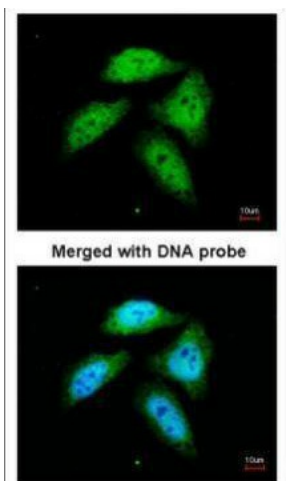
Note: Seq homology of immunogen across species: Mouse (100%), Rat (100%), Rhesus Monkey (100%)

Protein Pathways: Chronic myeloid leukemia, Notch signaling pathway, Pathways in cancer, Wnt signaling pathway

Product images:



Sample (30 ug of whole cell lysate). A: HeLa. 10% SDS PAGE. TA308690 diluted at 1:1000.



Immunofluorescence analysis of paraformaldehyde-fixed HeLa, using CtBP1 (TA308690) antibody at 1:200 dilution.