

## Product datasheet for **TA308689**

### PDE4C Rabbit Polyclonal Antibody

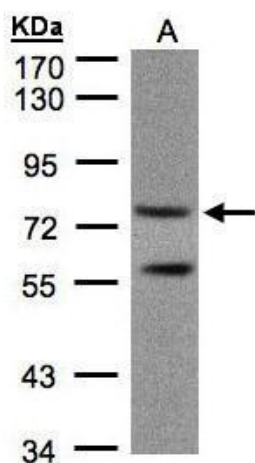
#### Product data:

Product Type:	Primary Antibodies
Applications:	IHC, WB
Recommended Dilution:	IHC:1:100-1:1000; WB:1:500-1:3000
Reactivity:	Human (Predicted: Bovine)
Host:	Rabbit
Isotype:	IgG
Clonality:	Polyclonal
Immunogen:	Recombinant fragment corresponding to a region within amino acids 325 and 667 of PDE4C (Uniprot ID#Q08493)
Formulation:	0.1M Tris, 0.1M Glycine, 10% Glycerol (pH7). 0.01% Thimerosal was added as a preservative.
Concentration:	lot specific
Purification:	Purified by antigen-affinity chromatography.
Conjugation:	Unconjugated
Storage:	Store at -20°C as received.
Stability:	Stable for 12 months from date of receipt.
Predicted Protein Size:	80 kDa
Gene Name:	phosphodiesterase 4C
Database Link:	<a href="#">NP_001092289</a> <a href="#">Entrez Gene 5143 Human Q08493</a>
Synonyms:	DPDE1; PDE21
Note:	Seq homology of immunogen across species: Bovine (96%)
Protein Families:	Druggable Genome
Protein Pathways:	Progesterone-mediated oocyte maturation, Purine metabolism

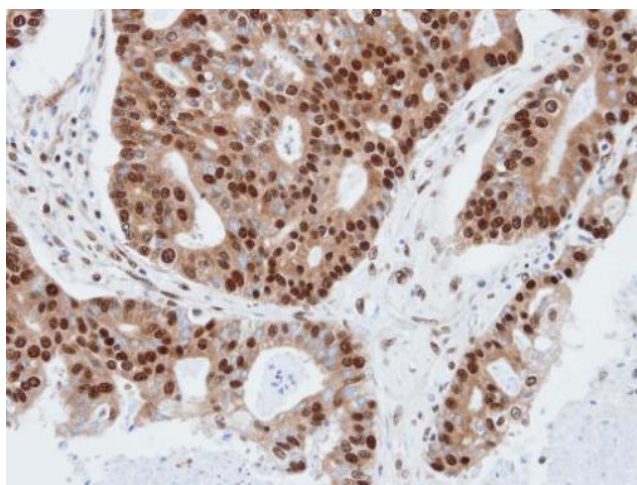


[View online »](#)

## Product images:



Sample (30 ug of whole cell lysate). A:293T. 7.5% SDS PAGE. TA308689 diluted at 1:1000



Immunohistochemical analysis of paraffin-embedded endometrial, using PDE4C (TA308689) antibody at 1:100 dilution.