

## Product datasheet for **TA308687**

### PDHA1 Rabbit Polyclonal Antibody

#### Product data:

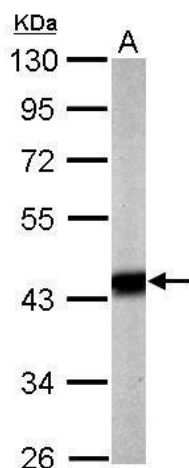
Product Type:	Primary Antibodies
Applications:	IF, IHC, WB
Recommended Dilution:	ICC/IF:1:100-1:1000; IHC:1:100-1:1000; WB:1:1000-1:10000
Reactivity:	Human, Mouse (Predicted: Chimpanzee, Rhesus Monkey)
Host:	Rabbit
Isotype:	IgG
Clonality:	Polyclonal
Immunogen:	Recombinant fragment corresponding to a region within amino acids 39 and 325 of (Uniprot ID#P08559)
Formulation:	1XPBS, 20% Glycerol (pH7). 0.025% ProClin 300 was added as a preservative.
Concentration:	lot specific
Purification:	Purified by antigen-affinity chromatography.
Conjugation:	Unconjugated
Storage:	Store at -20°C as received.
Stability:	Stable for 12 months from date of receipt.
Predicted Protein Size:	43 kDa
Gene Name:	pyruvate dehydrogenase (lipoamide) alpha 1
Database Link:	<a href="#">NP_000275</a> <a href="#">Entrez Gene 18597 Mouse</a> <a href="#">Entrez Gene 5160 Human</a> <a href="#">P08559</a>

**Background:** The pyruvate dehydrogenase complex is a nuclear-encoded mitochondrial matrix multienzyme complex that provides the primary link between glycolysis and the tricarboxylic acid (TCA) cycle by catalyzing the irreversible conversion of pyruvate into acetyl-CoA. The PDH complex is composed of multiple copies of 3 enzymes: E1 (PDHA1); dihydrolipoyl transacetylase (DLAT; MIM 608770) (E2; EC 2.3.1.12); and dihydrolipoyl dehydrogenase (DLD; MIM 238331) (E3; EC 1.8.1.4). The E1 enzyme is a heterotetramer of 2 alpha and 2 beta subunits. The E1-alpha subunit contains the E1 active site and plays a key role in the function of the PDH complex (Brown et al., 1994 [PubMed 7853374]). [supplied by OMIM]

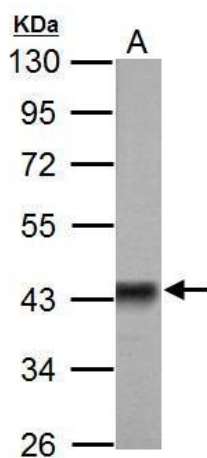


[View online »](#)

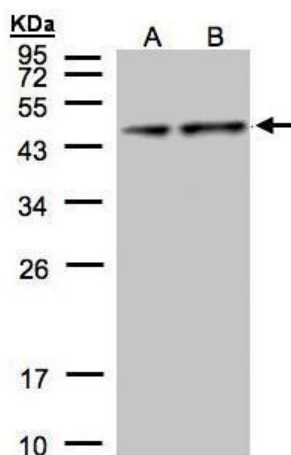
<b>Synonyms:</b>	PDHA; PDHAD; PDHCE1A; PHE1A
<b>Note:</b>	Seq homology of immunogen across species: Rhesus Monkey (100%), Chimpanzee (100%)
<b>Protein Families:</b>	Druggable Genome
<b>Protein Pathways:</b>	Butanoate metabolism, Citrate cycle (TCA cycle), Glycolysis / Gluconeogenesis, Metabolic pathways, Pyruvate metabolism, Valine, leucine and isoleucine biosynthesis

**Product images:**

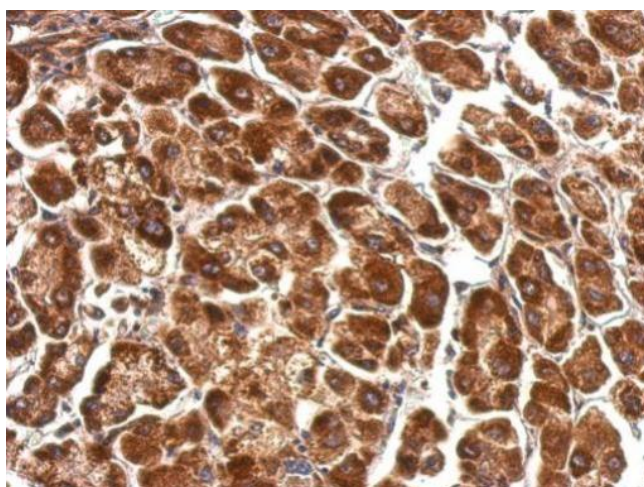
Sample (20 ug of whole cell lysate). A: mouse brain. 10% SDS PAGE. TA308687 diluted at 1:5000.



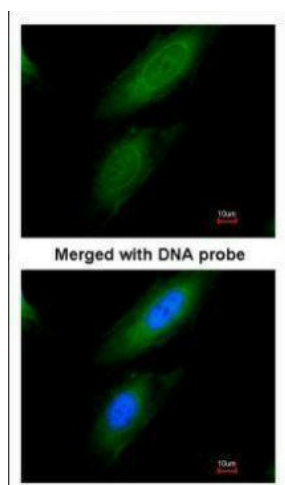
Sample (50 ug of whole cell lysate). A: Rat brain. 10% SDS PAGE. TA308687 diluted at 1:3000.



Sample (30 ug of whole cell lysate). A:Hep G2. B:MOLT4. 12% SDS PAGE. TA308687 diluted at 1:1000



Pyruvate Dehydrogenase E1 alpha antibody detects PDHA1 protein at cytosol on hepatoma by immunohistochemical analysis. Sample: Paraffin-embedded hepatoma. Pyruvate Dehydrogenase E1 alpha antibody (TA308687) dilution: 1:500.



Immunofluorescence analysis of paraformaldehyde-fixed HeLa, using Pyruvate Dehydrogenase E1 alpha (TA308687) antibody at 1:200 dilution.