

Product datasheet for **TA308684**

SEC61A (SEC61A1) Rabbit Polyclonal Antibody

Product data:

Product Type:	Primary Antibodies
Applications:	IF, IHC, WB
Recommended Dilution:	ICC/IF:1:100-1:1000; IHC:1:100-1:1000; WB:1:500-1:3000
Reactivity:	Human (Predicted: Rat, Zebrafish, Xenopus, Dog, Pig, Bovine, Rhesus Monkey, X. tropicalis, Mouse)
Host:	Rabbit
Isotype:	IgG
Clonality:	Polyclonal
Immunogen:	Synthetic peptide corresponding to a region within amino acids 413 and 476 of SEC61A1
Formulation:	1XPBS, 20% Glycerol (pH7). 0.025% ProClin 300 was added as a preservative.
Concentration:	lot specific
Purification:	Purified by antigen-affinity chromatography.
Conjugation:	Unconjugated
Storage:	Store at -20°C as received.
Stability:	Stable for 12 months from date of receipt.
Predicted Protein Size:	52 kDa
Gene Name:	Sec61 translocon alpha 1 subunit
Database Link:	NP_037468 Entrez Gene 53421 Mouse Entrez Gene 80843 Rat Entrez Gene 404006 Dog Entrez Gene 29927 Human P61619
Background:	The protein encoded by this gene belongs to the SECY/SEC61- alpha family. It appears to play a crucial role in the insertion of secretory and membrane polypeptides into the endoplasmic reticulum. This protein found to be tightly associated with membrane-bound ribosomes, either directly or through adaptor proteins. This gene encodes an alpha subunit of the heteromeric SEC61 complex, which also contains beta and gamma subunits. [provided by RefSeq]
Synonyms:	HSEC61; SEC61; SEC61A



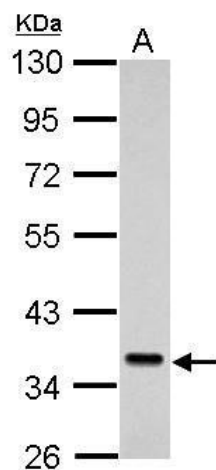
[View online »](#)

Note: Seq homology of immunogen across species: Mouse (100%), Rat (100%), Zebrafish (100%), Xenopus laevis (93%), Xenopus Tropicalis (100%), Dog (100%), Pig (100%), Rhesus Monkey (100%), Bovine (100%)

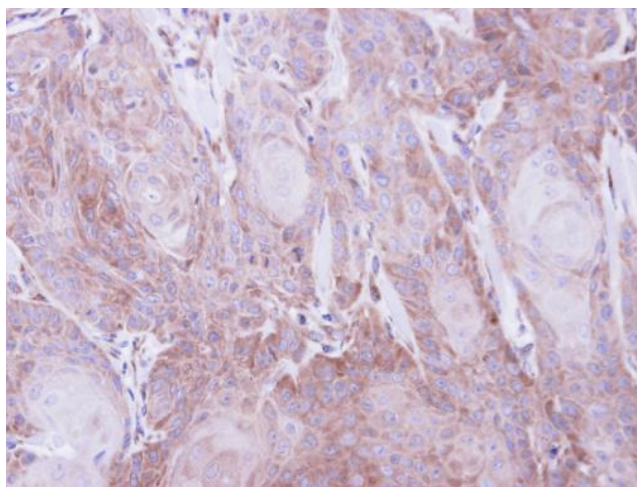
Protein Families: Transmembrane

Protein Pathways: Vibrio cholerae infection

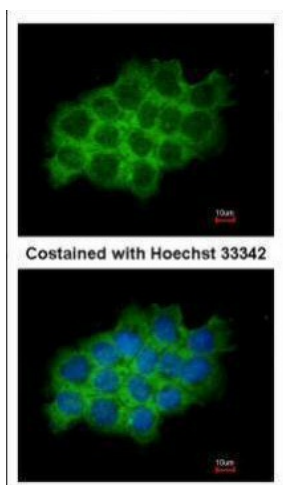
Product images:



Sample (30 ug of whole cell lysate). A: K562. 10% SDS PAGE. TA308684 diluted at 1:1000.



Immunohistochemical analysis of paraffin-embedded Cal27 xenograft, using SEC61A1 (TA308684) antibody at 1:500 dilution.



Immunofluorescence analysis of methanol-fixed A431, using SEC61A1 (TA308684) antibody at 1:200 dilution.