

## Product datasheet for **TA308683**

### **BAP31 (BCAP31) Rabbit Polyclonal Antibody**

#### **Product data:**

Product Type:	Primary Antibodies
Applications:	IF, IHC, WB
Recommended Dilution:	ICC/IF:1:100-1:1000; IHC:1:100-1:1000; WB:1:500-1:3000
Reactivity:	Human (Predicted: Mouse, Rat)
Host:	Rabbit
Isotype:	IgG
Clonality:	Polyclonal
Immunogen:	Recombinant fragment corresponding to a region within amino acids 1 and 246 of BCAP31 (Uniprot ID#P51572)
Formulation:	0.1M Tris, 0.1M Glycine, 10% Glycerol (pH7). 0.01% Thimerosal was added as a preservative.
Concentration:	lot specific
Purification:	Purified by antigen-affinity chromatography.
Conjugation:	Unconjugated
Storage:	Store at -20°C as received.
Stability:	Stable for 12 months from date of receipt.
Predicted Protein Size:	28 kDa
Gene Name:	B-cell receptor-associated protein 31
Database Link:	<a href="#">NP_001132929</a> <a href="#">Entrez Gene 27061 MouseEntrez Gene 293852 RatEntrez Gene 10134 Human P51572</a>

**Background:** This gene encodes a member of the B-cell receptor associated protein 31 superfamily. The encoded protein is a multi-pass transmembrane protein of the endoplasmic reticulum that is involved in the anterograde transport of membrane proteins from the endoplasmic reticulum to the Golgi and in the caspase 8-mediated apoptosis. Microdeletions in this gene are associated with the contiguous ABCD1/DXS1375E deletion syndrome. Two pseudogenes have been identified on chromosome 16. Alternatively spliced transcript variants encoding distinct isoforms have been described although the biological validity of some of the variants has not been determined. [provided by RefSeq]



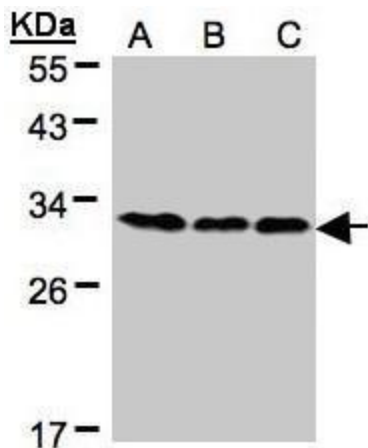
[View online »](#)

**Synonyms:** 6C6-AG; BAP31; CDM; DDCH; DXS1357E

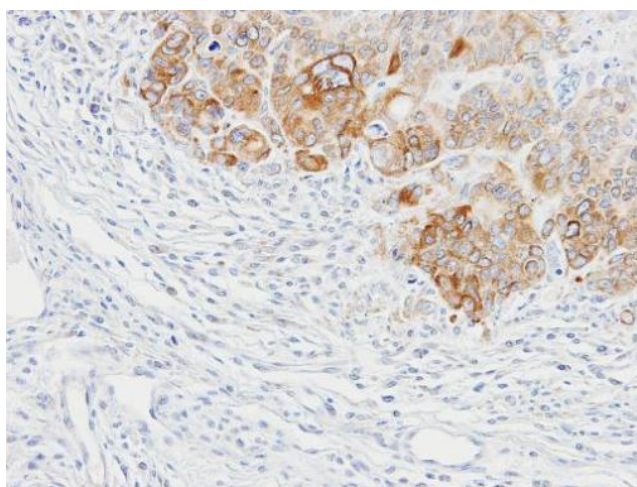
**Note:** Seq homology of immunogen across species: Mouse (91%), Rat (92%)

**Protein Families:** Druggable Genome, Transmembrane

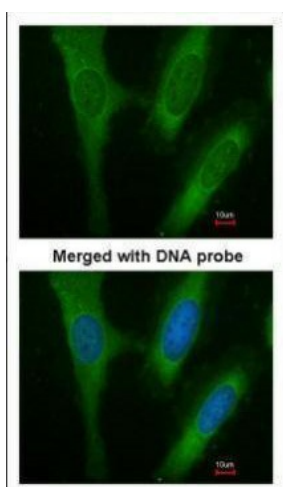
**Product images:**



Sample (30 ug of whole cell lysate). A:293T. B:A431. C:H1299. 12% SDS PAGE. TA308683 diluted at 1:500



Immunohistochemical analysis of paraffin-embedded SW480 xenograft, using BCAP31 (TA308683) antibody at 1:100 dilution.



Immunofluorescence analysis of paraformaldehyde-fixed HeLa, using BAP31 (TA308683) antibody at 1:200 dilution.