

Product datasheet for TA308680

S100A11 Rabbit Polyclonal Antibody

Product data:

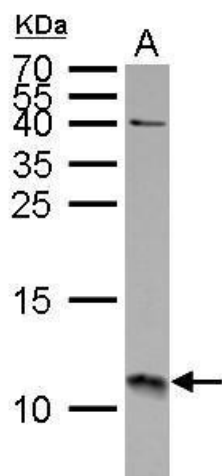
Product Type:	Primary Antibodies
Applications:	IF, IHC, WB
Recommended Dilution:	ICC/IF:1:100-1:1000; IHC:1:100-1:1000; WB:1:500-1:3000
Reactivity:	Human (Predicted: Mouse, Rat, Pig, Rabbit, Bovine)
Host:	Rabbit
Isotype:	IgG
Clonality:	Polyclonal
Immunogen:	Synthetic peptide corresponding to a region within amino acids 8 and 102 of S100A11 (Uniprot ID#P31949)
Formulation:	0.1M Tris, 0.1M Glycine, 10% Glycerol (pH7). 0.01% Thimerosal was added as a preservative.
Concentration:	lot specific
Purification:	Purified by antigen-affinity chromatography.
Conjugation:	Unconjugated
Storage:	Store at -20°C as received.
Stability:	Stable for 12 months from date of receipt.
Predicted Protein Size:	12 kDa
Gene Name:	S100 calcium binding protein A11
Database Link:	NP_005611 Entrez Gene 20195 MouseEntrez Gene 445415 RatEntrez Gene 6282 Human P31949
Background:	The protein encoded by this gene is a member of the S100 family of proteins containing 2 EF-hand calcium-binding motifs. S100 proteins are localized in the cytoplasm and/or nucleus of a wide range of cells, and involved in the regulation of a number of cellular processes such as cell cycle progression and differentiation. S100 genes include at least 13 members which are located as a cluster on chromosome 1q21. This protein may function in motility, invasion, and tubulin polymerization. Chromosomal rearrangements and altered expression of this gene have been implicated in tumor metastasis. [provided by RefSeq]
Synonyms:	HEL-S-43; MLN70; S100C



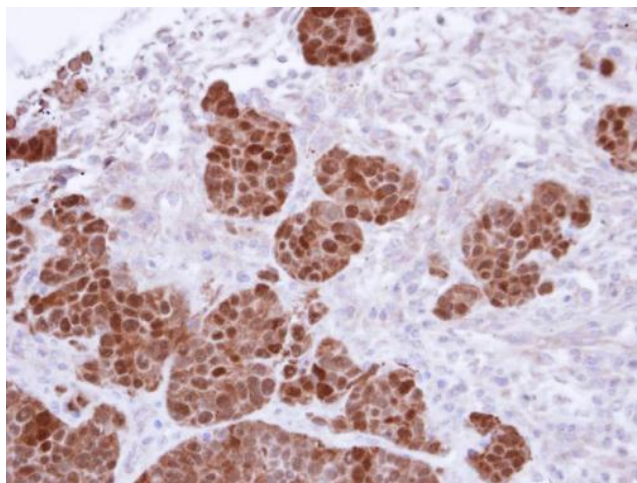
[View online »](#)

Note: Seq homology of immunogen across species: Mouse (87%), Rat (93%), Pig (87%), Rabbit (93%), Bovine (93%)

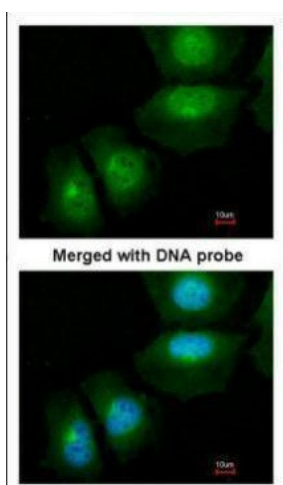
Product images:



S100A11 antibody detects S100A11 protein by Western blot analysis. A. 30 ug A431 whole cell lysate/extract. 15 % SDS-PAGE. S100A11 antibody (TA308680) dilution: 1:1000



Immunohistochemical analysis of paraffin-embedded SW480 Xenograft, using S100A11 (TA308680) antibody at 1:500 dilution.



Immunofluorescence analysis of paraformaldehyde-fixed HeLa, using S100A11 (TA308680) antibody at 1:200 dilution.