

## Product datasheet for **TA308678**

### GRASP1 (GRIPAP1) Rabbit Polyclonal Antibody

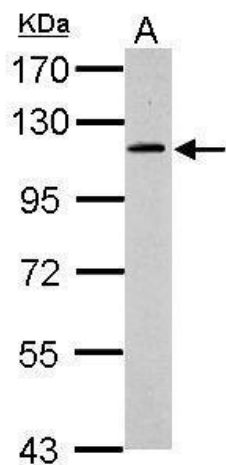
#### Product data:

Product Type:	Primary Antibodies
Applications:	WB
Recommended Dilution:	WB:1:500-1:3000
Reactivity:	Human
Host:	Rabbit
Isotype:	IgG
Clonality:	Polyclonal
Immunogen:	Synthetic peptide corresponding to a region within amino acids 311 and 401 of GRASP1 (Uniprot ID#Q4V328)
Formulation:	0.1M Tris, 0.1M Glycine, 10% Glycerol (pH7). 0.01% Thimerosal was added as a preservative.
Concentration:	lot specific
Purification:	Purified by antigen-affinity chromatography.
Conjugation:	Unconjugated
Storage:	Store at -20°C as received.
Stability:	Stable for 12 months from date of receipt.
Predicted Protein Size:	96 kDa
Gene Name:	GRIP1 associated protein 1
Database Link:	<a href="#">NP_997555</a> <a href="#">Entrez Gene 56850 Human Q4V328</a>
Background:	GRASP1 is a neuron-specific guanine nucleotide exchange factor for the Ras family of small G proteins (RasGEF) and is associated with the GRIP/AMPA receptor complex in brain (Ye et al., 2000 [PubMed 10896157]). [supplied by OMIM]
Synonyms:	GRASP-1
Protein Families:	Druggable Genome



[View online »](#)

## Product images:



Sample (30 ug of whole cell lysate). A: HepG2.  
7.5% SDS PAGE. TA308678 diluted at 1:500.