

## Product datasheet for **TA308677**

### HMGCL Rabbit Polyclonal Antibody

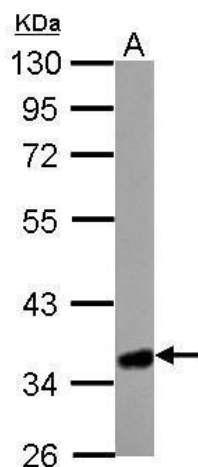
#### Product data:

Product Type:	Primary Antibodies
Applications:	IF, IHC, WB
Recommended Dilution:	ICC/IF:1:100-1:1000; IHC:1:100-1:1000; WB:1:1000-1:10000
Reactivity:	Human
Host:	Rabbit
Isotype:	IgG
Clonality:	Polyclonal
Immunogen:	Recombinant fragment corresponding to a region within amino acids 1 and 325 of HMGCL (Uniprot ID#P35914)
Formulation:	0.1M Tris, 0.1M Glycine, 10% Glycerol (pH7). 0.01% Thimerosal was added as a preservative.
Concentration:	lot specific
Purification:	Purified by antigen-affinity chromatography.
Conjugation:	Unconjugated
Storage:	Store at -20°C as received.
Stability:	Stable for 12 months from date of receipt.
Predicted Protein Size:	34 kDa
Gene Name:	3-hydroxymethyl-3-methylglutaryl-CoA lyase
Database Link:	<a href="#">NP_000182</a> <a href="#">Entrez Gene 3155 Human P35914</a>
Synonyms:	HL
Protein Families:	Druggable Genome
Protein Pathways:	Butanoate metabolism, Metabolic pathways, Synthesis and degradation of ketone bodies, Valine, leucine and isoleucine degradation

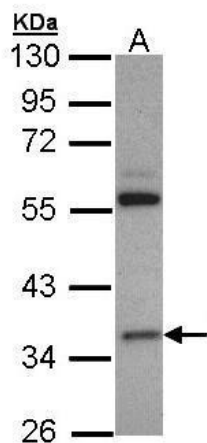


[View online »](#)

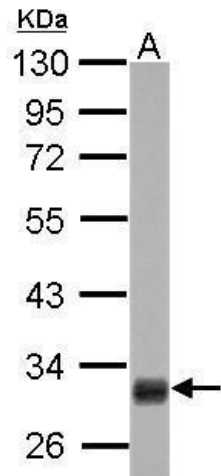
## Product images:



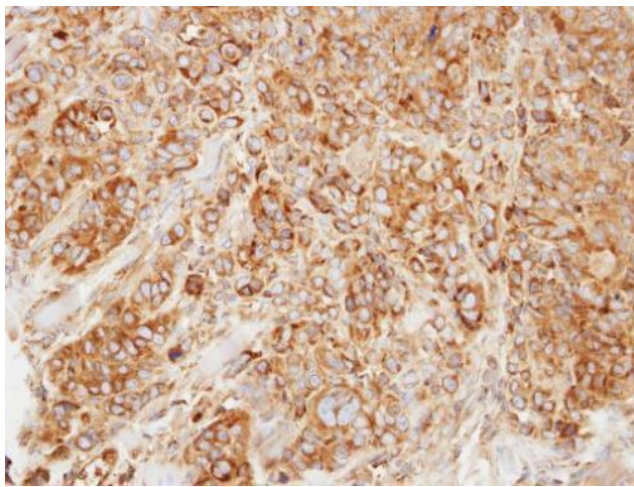
HMGCL antibody detects HMGCL protein by Western blot analysis. A. 50 ug mouse liver lysate/extract. 10 % SDS-PAGE. HMGCL antibody (TA308677) dilution: 1:10000



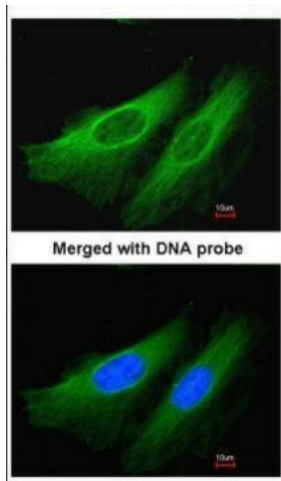
Sample (30 ug of whole cell lysate). A: H1299. 10% SDS PAGE. TA308677 diluted at 1:3000



HMGCL antibody detects HMGCL protein by Western blot analysis. A. 50 ug rat liver lysate/extract. 10 % SDS-PAGE. HMGCL antibody (TA308677) dilution: 1:10000



Immunohistochemical analysis of paraffin-embedded SW480 xenograft, using HMGCL (TA308677) antibody at 1:500 dilution.



Immunofluorescence analysis of paraformaldehyde-fixed HeLa, using HL (TA308677) antibody at 1:200 dilution.