

Product datasheet for **TA308676**

TRIM23 Rabbit Polyclonal Antibody

Product data:

Product Type:	Primary Antibodies
Applications:	IF, IHC, WB
Recommended Dilution:	ICC/IF:1:100-1:1000; IHC:1:100-1:1000; WB:1:500-1:3000
Reactivity:	Human (Predicted: Rhesus Monkey)
Host:	Rabbit
Isotype:	IgG
Clonality:	Polyclonal
Immunogen:	Synthetic peptide corresponding to a region within amino acids 1 and 44 of TRIM23 (Uniprot ID#P36406)
Formulation:	1XPBS, 20% Glycerol (pH7). 0.01% Thimerosal was added as a preservative.
Concentration:	lot specific
Purification:	Purified by antigen-affinity chromatography.
Conjugation:	Unconjugated
Storage:	Store at -20°C as received.
Stability:	Stable for 12 months from date of receipt.
Predicted Protein Size:	64 kDa
Gene Name:	tripartite motif containing 23
Database Link:	NP_150231 Entrez Gene 373 Human P36406



[View online »](#)

Background:

The protein encoded by this gene is a member of the tripartite motif (TRIM) family. The TRIM motif includes three zinc-binding domains, a RING, a B-box type 1 and a B-box type 2, and a coiled-coil region. This protein is also a member of the ADP ribosylation factor family of guanine nucleotide-binding family of proteins. Its carboxy terminus contains an ADP-ribosylation factor domain and a guanine nucleotide binding site, while the amino terminus contains a GTPase activating protein domain which acts on the guanine nucleotide binding site. The protein localizes to lysosomes and the Golgi apparatus. It plays a role in the formation of intracellular transport vesicles, their movement from one compartment to another, and phospholipase D activation. Three alternatively spliced transcript variants for this gene have been described. [provided by RefSeq]

Synonyms:

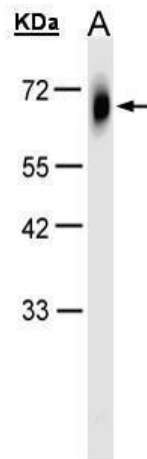
ARD1; ARFD1; RNF46

Note:

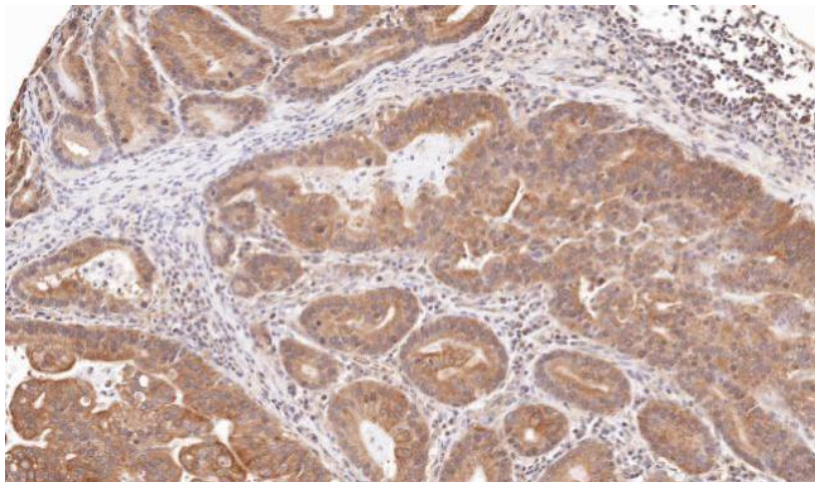
Seq homology of immunogen across species: Rhesus Monkey (100%)

Protein Families:

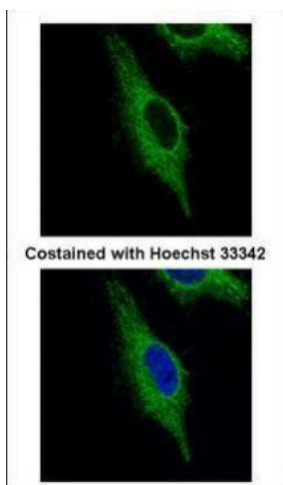
Druggable Genome

Product images:

Sample (30 ug of whole cell lysate). A:HeLa S3.
10% SDS PAGE. TA308676 diluted at 1:1000



Immunohistochemical analysis of paraffin-embedded gastric CA, using TRIM23 (TA308676) antibody at 1:100 dilution.



Confocal immunofluorescence analysis (Olympus FV10i) of paraformaldehyde-fixed HeLa, using TRIM23 (TA308676) antibody (Green) at 1:500 dilution.