

Product datasheet for **TA308675**

CLIC3 Rabbit Polyclonal Antibody

Product data:

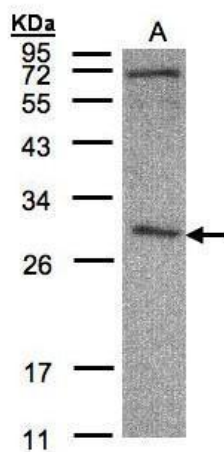
Product Type:	Primary Antibodies
Applications:	IHC, WB
Recommended Dilution:	IHC:1:100-1:1000; WB:1:500-1:3000
Reactivity:	Human (Predicted: Mouse, Rat, Bovine)
Host:	Rabbit
Isotype:	IgG
Clonality:	Polyclonal
Immunogen:	Recombinant fragment corresponding to a region within amino acids 1 and 236 of CLIC3 (Uniprot ID#O95833)
Formulation:	0.1M Tris, 0.1M Glycine, 10% Glycerol (pH7). 0.01% Thimerosal was added as a preservative.
Purification:	Purified by antigen-affinity chromatography.
Conjugation:	Unconjugated
Storage:	Store at -20°C as received.
Stability:	Stable for 12 months from date of receipt.
Predicted Protein Size:	27 kDa
Gene Name:	chloride intracellular channel 3
Database Link:	NP_004660 Entrez Gene 69454 Mouse Entrez Gene 296566 Rat Entrez Gene 9022 Human O95833
Background:	Chloride channels are a diverse group of proteins that regulate fundamental cellular processes including stabilization of cell membrane potential, transepithelial transport, maintenance of intracellular pH, and regulation of cell volume. Chloride intracellular channel 3 is a member of the p64 family and is predominantly localized in the nucleus and stimulates chloride ion channel activity. In addition, this protein may participate in cellular growth control, based on its association with ERK7, a member of the MAP kinase family. [provided by RefSeq]
Synonyms:	chloride intracellular channel 3; OTTHUMP00000022630
Note:	Seq homology of immunogen across species: Mouse (89%), Rat (88%), Bovine (90%)



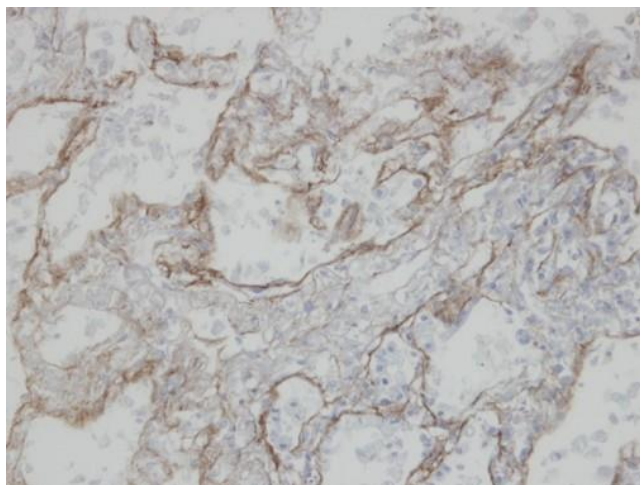
[View online »](#)

Protein Families: Druggable Genome, Ion Channels: Other

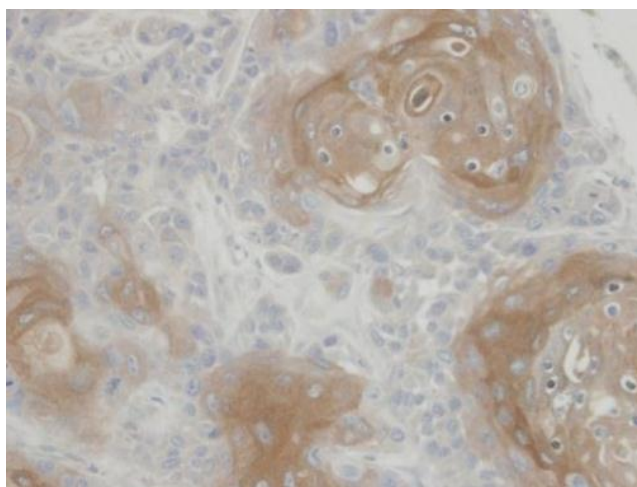
Product images:



Sample (30 ug of whole cell lysate). A:HeLa S3.
12% SDS PAGE. TA308675 diluted at 1:500



Immunohistochemical analysis of paraffin-
embedded T (IV) (lung CA), using CLIC3
(TA308675) antibody at 1:100 dilution.



Immunohistochemical analysis of paraffin-embedded Ca922 xenograft, using CLIC3 (TA308675) antibody at 1:100 dilution.