

## Product datasheet for **TA308673**

### CACNA1B Rabbit Polyclonal Antibody

#### Product data:

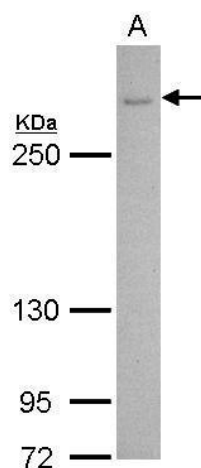
Product Type:	Primary Antibodies
Applications:	IF, IP, WB
Recommended Dilution:	ICC/IF:1:100-1:1000; WB:1:500-1:3000
Reactivity:	Human
Host:	Rabbit
Isotype:	IgG
Clonality:	Polyclonal
Immunogen:	Recombinant fragment corresponding to a region within amino acids 2013 and 2209 of CACNA1B (Uniprot ID#Q00975)
Formulation:	1XPBS, 10% Glycerol (pH7). 0.01% Thimerosal was added as a preservative.
Purification:	Purified by antigen-affinity chromatography.
Conjugation:	Unconjugated
Storage:	Store at -20°C as received.
Stability:	Stable for 12 months from date of receipt.
Predicted Protein Size:	263 kDa
Gene Name:	calcium voltage-gated channel subunit alpha1 B
Database Link:	<a href="#">NP_000709</a> <a href="#">Entrez Gene 774 Human</a> <a href="#">Q00975</a>
Background:	Voltage-dependent Ca(2+) channels are multisubunit complexes found in the membrane of many excitable cells that regulate calcium entry (see MIM 601011). N-type calcium channels, which control neurotransmitter release from neurons, are dihydropyridine-insensitive and omega-conotoxin-sensitive. The alpha-1 subunit forms the pore through which calcium enters the cell, and is encoded by a family of at least 5 genes. [supplied by OMIM]
Synonyms:	BIII; CACNL1A5; CACNN; Cav2.2
Protein Families:	Druggable Genome, Ion Channels: Calcium, Transmembrane



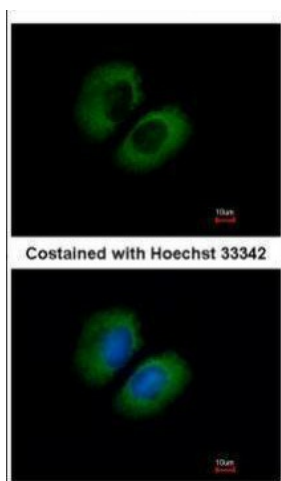
[View online »](#)

**Protein Pathways:** Calcium signaling pathway, MAPK signaling pathway, Taste transduction, Type II diabetes mellitus

**Product images:**



CACNA1B antibody [C3], C-term detects CACNA1B protein by Western blot analysis. A. 30  $\mu$ g U87-MG whole cell lysate/extract. 5 % SDS-PAGE. CACNA1B antibody [C3], C-term (TA308673) dilution: 1:500



Immunofluorescence analysis of methanol-fixed A549, using CACNA1B (TA308673) antibody at 1:500 dilution.

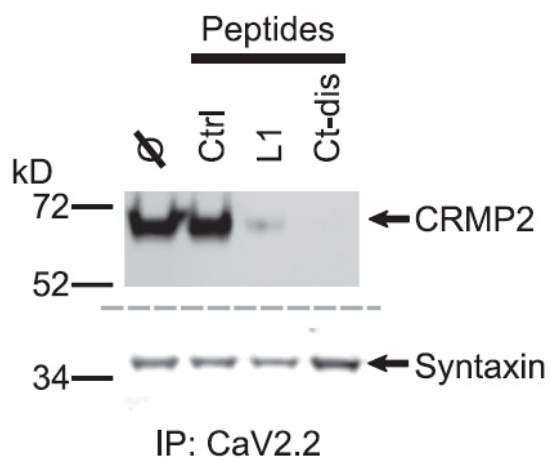


Figure from citation: Immunoprecipitation of CACNA1B (Cav2.2) protein level by using anti-CACNA1B antibody in rat dorsal root ganglia. [View Citation](#)