

## Product datasheet for **TA308672**

### TULP1 Rabbit Polyclonal Antibody

#### Product data:

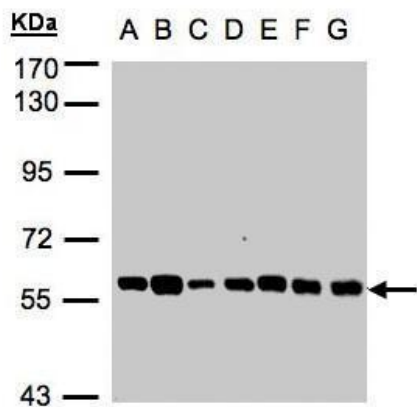
Product Type:	Primary Antibodies
Applications:	IF, IHC, WB
Recommended Dilution:	ICC/IF:1:100-1:1000; IHC:1:100-1:1000; WB:1:500-1:3000
Reactivity:	Human (Predicted: Mouse, Rat, Bovine)
Host:	Rabbit
Isotype:	IgG
Clonality:	Polyclonal
Immunogen:	Recombinant fragment corresponding to a region within amino acids 281 and 542 of TULP1 (Uniprot ID#O00294)
Formulation:	0.1M Tris, 0.1M Glycine, 10% Glycerol (pH7). 0.01% Thimerosal was added as a preservative.
Concentration:	lot specific
Purification:	Purified by antigen-affinity chromatography.
Conjugation:	Unconjugated
Storage:	Store at -20°C as received.
Stability:	Stable for 12 months from date of receipt.
Predicted Protein Size:	61 kDa
Gene Name:	tubby like protein 1
Database Link:	<a href="#">NP_003313</a> <a href="#">Entrez Gene 22157 Mouse</a> <a href="#">Entrez Gene 309900 Rat</a> <a href="#">Entrez Gene 7287 Human</a> <a href="#">O00294</a>
Background:	This gene encodes a member of the tubby-like gene family (TULPs). Members of this family have been identified in plants, vertebrates, and invertebrates and encode proteins of unknown function. TULP proteins share a conserved C-terminal region of approximately 200 amino acid residues. Mutations in this gene may be associated with retinitis pigmentosa. [provided by RefSeq]
Synonyms:	LCA15; RP14; TUBL1
Note:	Seq homology of immunogen across species: Mouse (93%), Rat (93%), Bovine (94%)



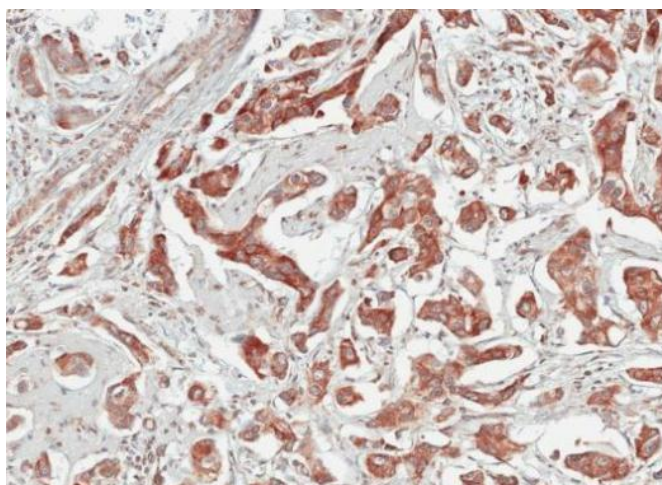
[View online »](#)

Protein Families: Druggable Genome

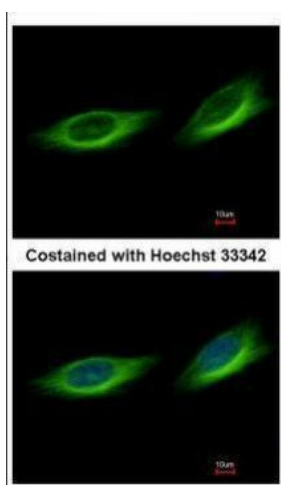
**Product images:**



Sample (30 ug whole cell lysate). A: 293T. B: A431. C: H1299. D: HeLa S3. E: Hep G2. F: MOLT4. G: Raji. 7.5% SDS PAGE. TA308672 diluted at 1:1000



Immunohistochemical analysis of paraffin-embedded Breast CA, using TULP1 (TA308672) antibody at 1:100 dilution.



Immunofluorescence analysis of methanol-fixed HeLa, using TULP1 (TA308672) antibody at 1:500 dilution.