

## Product datasheet for **TA308671**

### **CARD4 (NOD1) Rabbit Polyclonal Antibody**

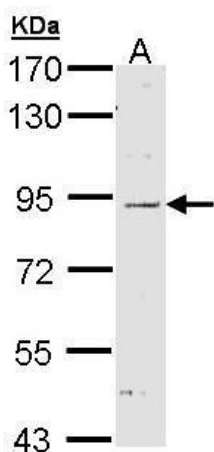
#### **Product data:**

<b>Product Type:</b>	Primary Antibodies
<b>Applications:</b>	IF, WB
<b>Recommended Dilution:</b>	ICC/IF:1:100-1:1000; WB:1:500-1:3000
<b>Reactivity:</b>	Human (Predicted: Mouse, Pig, Rat)
<b>Host:</b>	Rabbit
<b>Isotype:</b>	IgG
<b>Clonality:</b>	Polyclonal
<b>Immunogen:</b>	Recombinant fragment corresponding to a region within amino acids 698 and 953 of NOD1 (Uniprot ID#Q9Y239)
<b>Formulation:</b>	0.1M Tris, 0.1M Glycine, 10% Glycerol (pH7). 0.01% Thimerosal was added as a preservative.
<b>Concentration:</b>	lot specific
<b>Purification:</b>	Purified by antigen-affinity chromatography.
<b>Conjugation:</b>	Unconjugated
<b>Storage:</b>	Store at -20°C as received.
<b>Stability:</b>	Stable for 12 months from date of receipt.
<b>Predicted Protein Size:</b>	108 kDa
<b>Gene Name:</b>	nucleotide binding oligomerization domain containing 1
<b>Database Link:</b>	<a href="#">NP_006083</a> <a href="#">Entrez Gene 107607</a> <a href="#">MouseEntrez Gene 500133</a> <a href="#">RatEntrez Gene 10392</a> <a href="#">Human Q9Y239</a>
<b>Synonyms:</b>	CARD4; CLR7.1; NLRC1
<b>Note:</b>	Seq homology of immunogen across species: Mouse (81%), Pig (87%), Rat (82%)
<b>Protein Families:</b>	Druggable Genome
<b>Protein Pathways:</b>	Epithelial cell signaling in Helicobacter pylori infection, NOD-like receptor signaling pathway

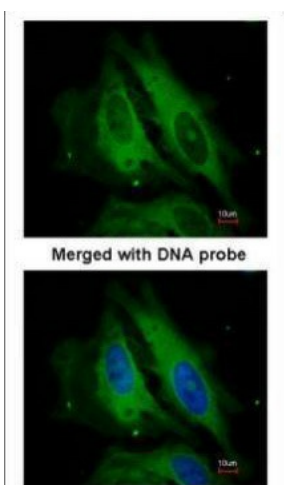


[View online »](#)

## Product images:



Sample (30 ug of whole cell lysate). A: H1299.  
7.5% SDS PAGE. TA308671 diluted at 1:1000.



Immunofluorescence analysis of  
paraformaldehyde-fixed HeLa, using NOD1  
(TA308671) antibody at 1:200 dilution.