

Product datasheet for **TA308668**

ME1 Rabbit Polyclonal Antibody

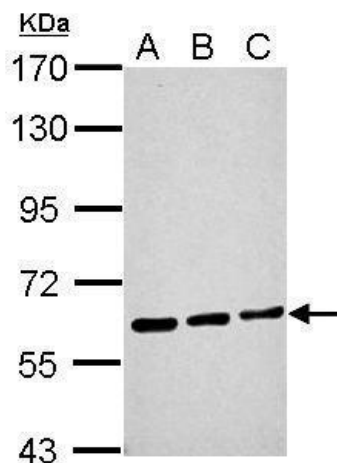
Product data:

Product Type:	Primary Antibodies
Applications:	IF, IHC, WB
Recommended Dilution:	ICC/IF:1:100-1:1000; IHC:1:100-1:1000; WB:1:500-1:3000
Reactivity:	Human
Host:	Rabbit
Isotype:	IgG
Clonality:	Polyclonal
Immunogen:	Recombinant fragment corresponding to a region within amino acids 161 and 519 of (Uniprot ID#P48163)
Formulation:	1XPBS, 20% Glycerol (pH7). 0.025% ProClin 300 was added as a preservative.
Concentration:	lot specific
Purification:	Purified by antigen-affinity chromatography.
Conjugation:	Unconjugated
Storage:	Store at -20°C as received.
Stability:	Stable for 12 months from date of receipt.
Predicted Protein Size:	64 kDa
Gene Name:	malic enzyme 1
Database Link:	NP_002386 Entrez Gene 4199 Human P48163
Background:	This gene encodes a cytosolic, NADP-dependent enzyme that generates NADPH for fatty acid biosynthesis. The activity of this enzyme, the reversible oxidative decarboxylation of malate, links the glycolytic and citric acid cycles. The regulation of expression for this gene is complex. Increased expression can result from elevated levels of thyroid hormones or by higher proportions of carbohydrates in the diet. [provided by RefSeq]
Synonyms:	HUMNDME; MES
Protein Pathways:	Metabolic pathways, PPAR signaling pathway, Pyruvate metabolism

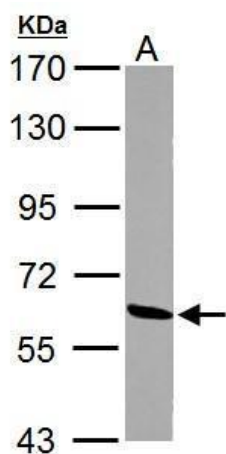


[View online »](#)

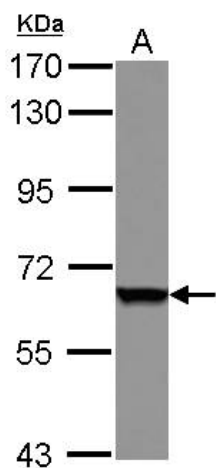
Product images:



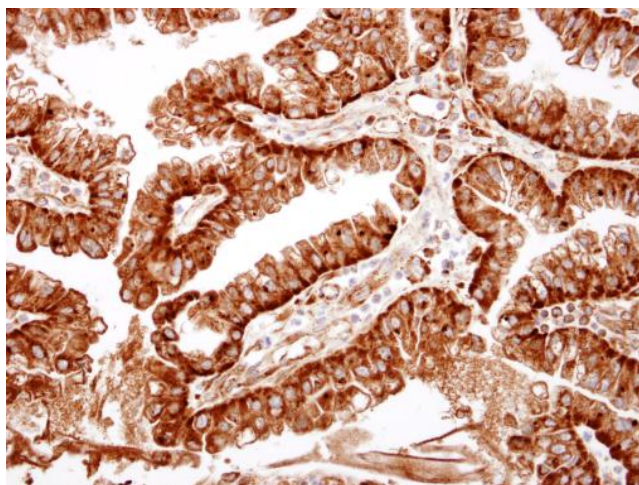
Sample (30 ug of whole cell lysate). A: NIH-3T3. B: JC. C: BCL-1. 7.5% SDS PAGE. TA308668 diluted at 1:1000.



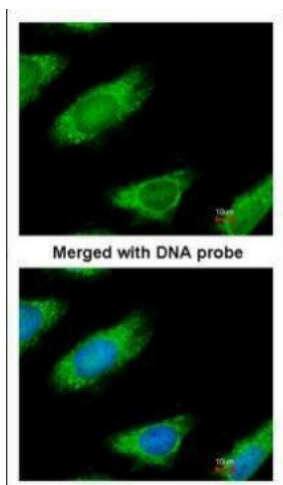
Sample (30 ug of whole cell lysate). A: PC-12. 7.5% SDS PAGE. TA308668 diluted at 1:1000.



Sample (30 ug of whole cell lysate). A: A431. 7.5% SDS PAGE. TA308668 diluted at 1:1000.



ME1 antibody detects ME1 protein at cytosol on human ovarian carcinoma by immunohistochemical analysis. Sample: Paraffin-embedded human ovarian carcinoma. ME1 antibody (TA308668) dilution: 1:500.



Immunofluorescence analysis of paraformaldehyde-fixed HeLa, using ME1 (TA308668) antibody at 1:200 dilution.