

## Product datasheet for **TA308666**

### ITPK1 Rabbit Polyclonal Antibody

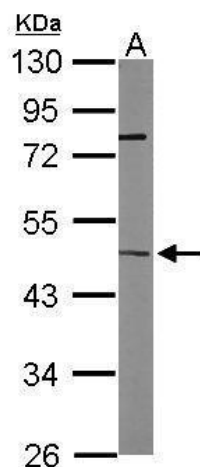
#### Product data:

|                         |   |
|-------------------------|---|
| Product Type:           | Primary Antibodies  |
| Applications:           | IF, WB  |
| Recommended Dilution:   | ICC/IF:1:100-1:1000; WB:1:500-1:3000  |
| Reactivity:             | Human, Mouse  |
| Host:                   | Rabbit  |
| Isotype:                | IgG   |
| Clonality:              | Polyclonal  |
| Immunogen:              | Recombinant fragment corresponding to a region within amino acids 171 and 414 of ITPK1 (Uniprot ID#Q13572)                                |
| Formulation:            | 0.1M Tris, 0.1M Glycine, 10% Glycerol (pH7). 0.01% Thimerosal was added as a preservative.  |
| Concentration:          | lot specific  |
| Purification:           | Purified by antigen-affinity chromatography.  |
| Conjugation:            | Unconjugated  |
| Storage:                | Store at -20°C as received.   |
| Stability:              | Stable for 12 months from date of receipt.  |
| Predicted Protein Size: | 46 kDa  |
| Gene Name:              | inositol-tetrakisphosphate 1-kinase   |
| Database Link:          | <a href="#">NP_001136066</a><br><a href="#">Entrez Gene 217837 Mouse</a> <a href="#">Entrez Gene 3705 Human</a><br><a href="#">Q13572</a> |
| Synonyms:               | ITRPK1  |
| Protein Families:       | Druggable Genome  |
| Protein Pathways:       | Inositol phosphate metabolism, Metabolic pathways, Phosphatidylinositol signaling system  |

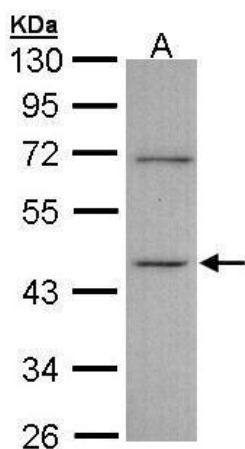


[View online »](#)

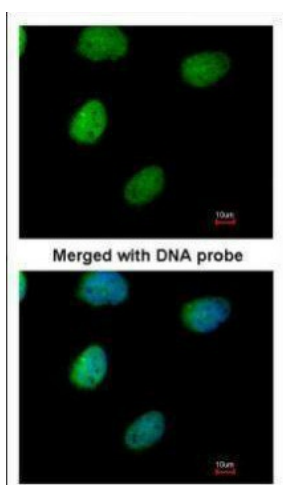
## Product images:



Sample (50 ug of whole cell lysate). A: Mouse brain. 10% SDS PAGE. TA308666 diluted at 1:1000.



Sample (30 ug of whole cell lysate). A: A431. 10% SDS PAGE. TA308666 diluted at 1:1000



Immunofluorescence analysis of paraformaldehyde-fixed HeLa, using ITPK1 (TA308666) antibody at 1:200 dilution.