

Product datasheet for **TA308656**

DUSP6 Rabbit Polyclonal Antibody

Product data:

Product Type:	Primary Antibodies
Applications:	WB
Recommended Dilution:	WB:1:500-1:3000
Reactivity:	Human, Mouse (Predicted: Bovine, Pig, Rhesus Monkey)
Host:	Rabbit
Isotype:	IgG
Clonality:	Polyclonal
Immunogen:	Recombinant fragment corresponding to a region within amino acids 82 and 370 of DUSP6 (Uniprot ID#Q16828)
Formulation:	0.1M Tris, 0.1M Glycine, 10% Glycerol (pH7). 0.01% Thimerosal was added as a preservative.
Purification:	Purified by antigen-affinity chromatography.
Conjugation:	Unconjugated
Storage:	Store at -20°C as received.
Stability:	Stable for 12 months from date of receipt.
Predicted Protein Size:	42 kDa
Gene Name:	dual specificity phosphatase 6
Database Link:	NP_001937 Entrez Gene 67603 Mouse Entrez Gene 1848 Human Q16828



[View online »](#)

Background:

The protein encoded by this gene is a member of the dual specificity protein phosphatase subfamily. These phosphatases inactivate their target kinases by dephosphorylating both the phosphoserine/threonine and phosphotyrosine residues. They negatively regulate members of the mitogen-activated protein (MAP) kinase superfamily (MAPK/ERK, SAPK/JNK, p38), which are associated with cellular proliferation and differentiation. Different members of the family of dual specificity phosphatases show distinct substrate specificities for various MAP kinases, different tissue distribution and subcellular localization, and different modes of inducibility of their expression by extracellular stimuli. This gene product inactivates ERK2, is expressed in a variety of tissues with the highest levels in heart and pancreas, and unlike most other members of this family, is localized in the cytoplasm. Two transcript variants encoding different isoforms have been found for this gene. [provided by RefSeq]

Synonyms:

HH19; MKP3; PYST1

Note:

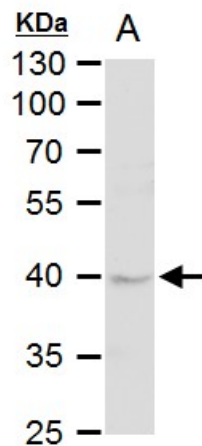
Seq homology of immunogen across species: Pig (100%), Rhesus Monkey (100%), Bovine (100%)

Protein Families:

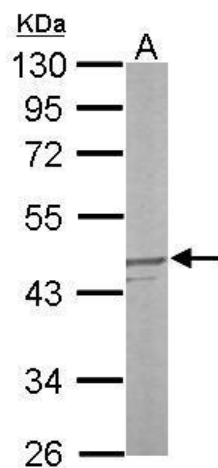
Druggable Genome, Phosphatase

Protein Pathways:

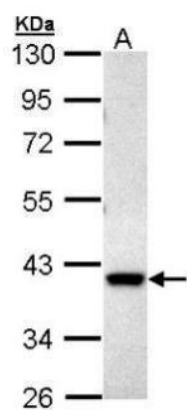
MAPK signaling pathway

Product images:

DUSP6 antibody [N2C3] detects DUSP6 protein by western blot analysis. A. 50 ug rat liver extract. 10 % SDS-PAGE. DUSP6 antibody [N2C3] (TA308656) dilution: 1:1000



Sample (50 ug of whole cell lysate). A: mouse liver. 10% SDS PAGE. TA308656 diluted at 1:1000.



Sample (30 ug of whole cell lysate). A: Hep G2. 10% SDS PAGE. TA308656 diluted at 1:1000.