

Product datasheet for **TA308654**

Nkx2.5 (NKX2-5) Rabbit Polyclonal Antibody

Product data:

Product Type:	Primary Antibodies
Applications:	IF, WB
Recommended Dilution:	ICC/IF:1:100-1:1000; WB:1:500-1:3000
Reactivity:	Human, Mouse
Host:	Rabbit
Isotype:	IgG
Clonality:	Polyclonal
Immunogen:	Recombinant fragment corresponding to a region within amino acids 1 and 218 of Nkx2.5 (Uniprot ID#P52952)
Formulation:	1XPBS, 20% Glycerol (pH7). 0.025% ProClin 300 was added as a preservative.
Concentration:	lot specific
Purification:	Purified by antigen-affinity chromatography.
Conjugation:	Unconjugated
Storage:	Store at -20°C as received.
Stability:	Stable for 12 months from date of receipt.
Predicted Protein Size:	35 kDa
Gene Name:	NK2 homeobox 5
Database Link:	NP_004378 Entrez Gene 18091 Mouse Entrez Gene 1482 Human P52952



[View online »](#)

Background:

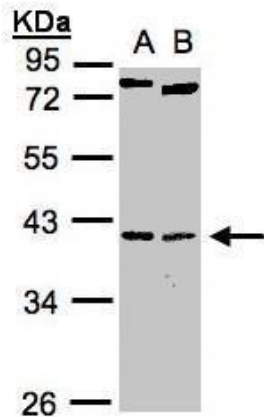
Homeobox-containing genes play critical roles in regulating tissue-specific gene expression essential for tissue differentiation, as well as determining the temporal and spatial patterns of development (Shiojima et al., 1995 [PubMed 7665173]). It has been demonstrated that a *Drosophila* homeobox-containing gene called 'tinman' is expressed in the developing dorsal vessel and in the equivalent of the vertebrate heart. Mutations in tinman result in loss of heart formation in the embryo, suggesting that tinman is essential for *Drosophila* heart formation. Furthermore, abundant expression of *Csx*, the presumptive mouse homolog of tinman, is observed only in the heart from the time of cardiac differentiation. *CSX*, the human homolog of murine *Csx*, has a homeodomain sequence identical to that of *Csx* and is expressed only in the heart, again suggesting that *CSX* plays an important role in human heart formation. [supplied by OMIM]

Synonyms:

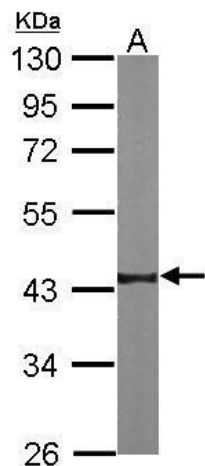
CHNG5; CSX; CSX1; HLHS2; NKX2.5; NKX2E; NKX4-1; VSD3

Protein Families:

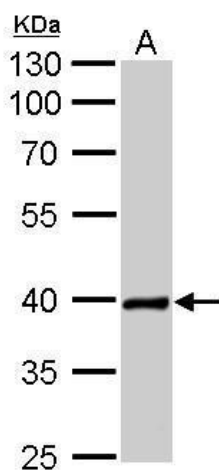
Transcription Factors

Product images:

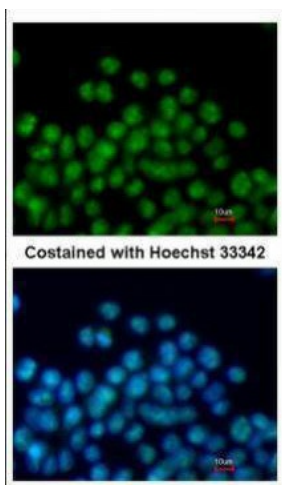
Sample (30 ug whole cell lysate). A:H1299. B:Raji.
10% SDS PAGE. TA308654 diluted at 1:1000



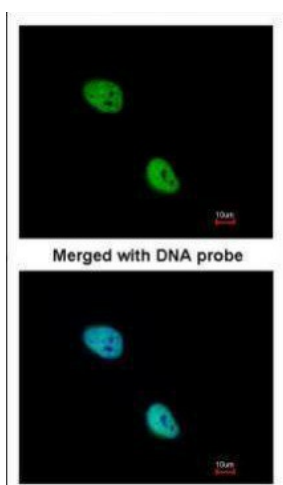
Sample (50 ug of whole cell lysate). A: mouse heart. 10% SDS PAGE. TA308654 diluted at 1:1000.



Nkx2.5 antibody detects NKX2-5 protein by Western blot analysis. A. 50 ug rat heart lysate/extract. 10 % SDS-PAGE. Nkx2.5 antibody (TA308654) dilution: 1:500



Immunofluorescence analysis of paraformaldehyde-fixed mouse ESC D3, using Nkx2.5 (TA308654) antibody at 1:200 dilution.



Immunofluorescence analysis of paraformaldehyde-fixed HeLa, using NKX2-5 (TA308654) antibody at 1:200 dilution.