

Product datasheet for **TA308649**

LRPPRC Rabbit Polyclonal Antibody

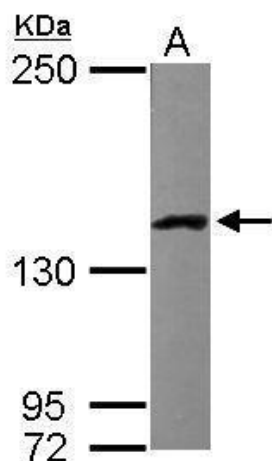
Product data:

Product Type:	Primary Antibodies
Applications:	IF, IHC, WB
Recommended Dilution:	ICC/IF:1:100-1:1000; IHC:1:100-1:1000; WB:1:1000-1:10000
Reactivity:	Human, Mouse (Predicted: Rat)
Host:	Rabbit
Isotype:	IgG
Clonality:	Polyclonal
Immunogen:	Recombinant fragment corresponding to a region within amino acids 611 and 937 of LRP130 (Uniprot ID#P42704)
Formulation:	1XPBS, 1% BSA, 20% Glycerol (pH7). 0.025% ProClin 300 was added as a preservative.
Concentration:	lot specific
Purification:	Purified by antigen-affinity chromatography.
Conjugation:	Unconjugated
Storage:	Store at -20°C as received.
Stability:	Stable for 12 months from date of receipt.
Predicted Protein Size:	158 kDa
Gene Name:	leucine rich pentatricopeptide repeat containing
Database Link:	NP_573566 Entrez Gene 72416 Mouse Entrez Gene 313867 Rat Entrez Gene 10128 Human P42704
Background:	This gene encodes a protein that is leucine-rich and is thought to play a role in regulating the interaction of the cytoskeleton with a variety of cellular processes. Mutations in this gene are associated with the French-Canadian type of Leigh syndrome. Transcripts ranging in size from 4.8 to 7.0 kb which result from alternative polyadenylation have been reported for this gene. [provided by RefSeq]
Synonyms:	CLONE-23970; GP130; LRP130; LSFC
Note:	Seq homology of immunogen across species: Rat (85%)

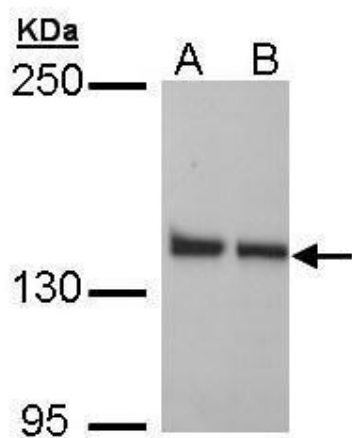


[View online »](#)

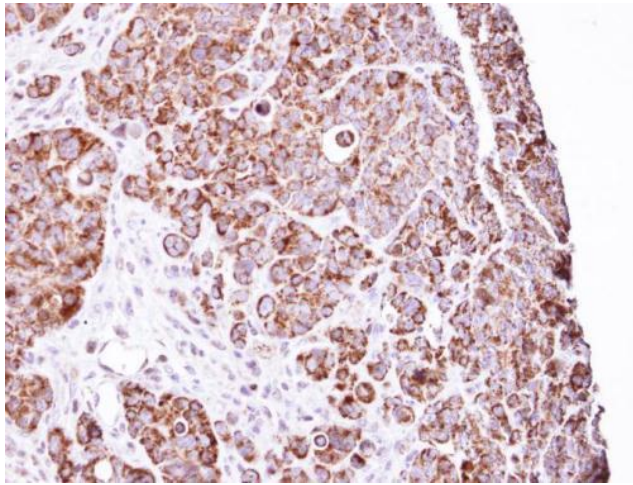
Product images:



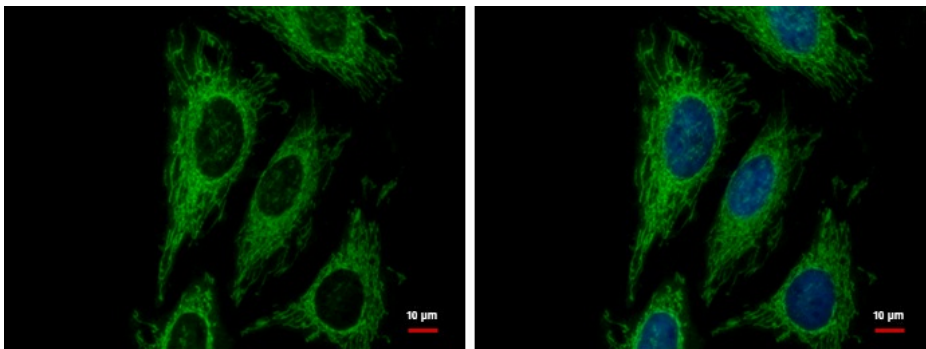
Sample (50 ug of whole cell lysate). A: Mouse brain. 5% SDS PAGE. TA308649 diluted at 1:5000.



Sample (30 ug of whole cell lysate). A: H1299. B: HeLa. 5% SDS PAGE. TA308649 diluted at 1:1000.



Immunohistochemical analysis of paraffin-embedded SW480 Xenograft, using LRP130 (TA308649) antibody at 1:100 dilution.



LRP130 antibody [N3C2], Internal detects LRP130 protein at mitochondria by immunofluorescent analysis. Sample: HeLa cells were fixed in 2% paraformaldehyde/culture medium at 37°C for 30min. Green: LRP130 protein stained by LRP130 antibody [N3C2], Interna