

Product datasheet for **TA308647**

GOLPH2 (GOLM1) Rabbit Polyclonal Antibody

Product data:

Product Type:	Primary Antibodies
Applications:	IF, IHC, WB
Recommended Dilution:	ICC/IF:1:100-1:1000; IHC:1:100-1:1000; WB:1:500-1:3000
Reactivity:	Human (Predicted: Bovine)
Host:	Rabbit
Isotype:	IgG
Clonality:	Polyclonal
Immunogen:	Synthetic peptide corresponding to a region within amino acids 339 and 401 of GOLPH2 (Uniprot ID#Q8NBJ4)
Formulation:	1XPBS, 20% Glycerol (pH7). 0.01% Thimerosal was added as a preservative.
Concentration:	lot specific
Purification:	Purified by antigen-affinity chromatography.
Conjugation:	Unconjugated
Storage:	Store at -20°C as received.
Stability:	Stable for 12 months from date of receipt.
Predicted Protein Size:	45 kDa
Gene Name:	golgi membrane protein 1
Database Link:	NP_057632 Entrez Gene 51280 Human Q8NBJ4
Background:	The Golgi complex plays a key role in the sorting and modification of proteins exported from the endoplasmic reticulum. The protein encoded by this gene is a type II Golgi transmembrane protein. It processes protein synthesized in the rough endoplasmic reticulum and assists in the transport of protein cargo through the Golgi apparatus. The expression of this encoded protein has been observed to be upregulated in response to viral infection. Two alternatively spliced transcript variants encoding the same protein have been described for this gene. [provided by RefSeq]
Synonyms:	bA379P1.3; C9orf155; GOLPH2; GP73; HEL46; PSEC0257

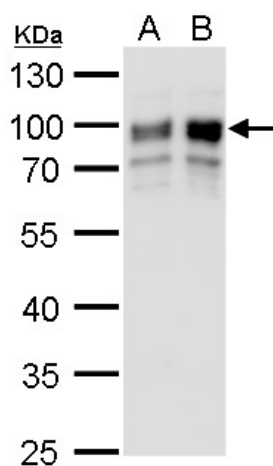


[View online »](#)

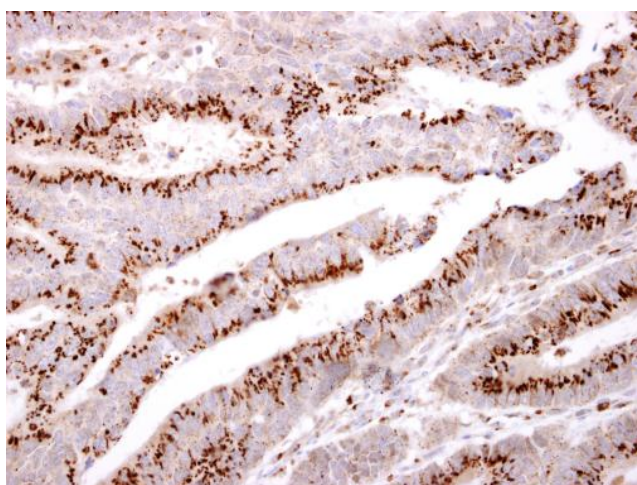
Note: Seq homology of immunogen across species: Bovine (92%)

Protein Families: Transmembrane

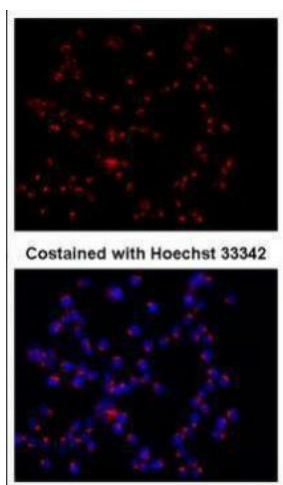
Product images:



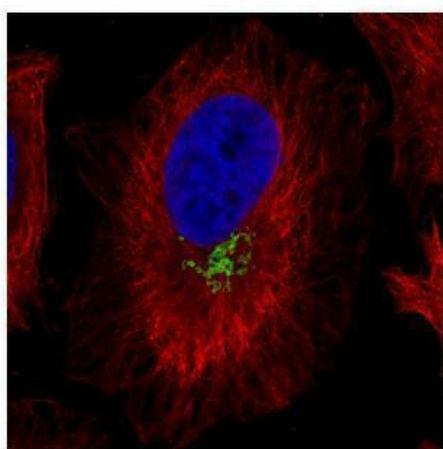
GOLPH2 antibody detects GOLPH2 protein by western blot analysis. A. 30 ug HeLa whole cell lysate/extract. B. 30 ug HeLa membrane fraction lysate/extract. 10 % SDS-PAGE. GOLPH2 antibody (TA308647) dilution: 1:500



GOLPH2 antibody [C3], C-term detects GOLPH2 protein at cytosol on human colon carcinoma by immunohistochemical analysis. Sample: Paraffin-embedded human colon carcinoma. GOLPH2 antibody [C3], C-term (TA308647) dilution: 1:500.



Immunofluorescence analysis of 70% methanol, 30% acetone-fixed HCT116, using GOLPH2 (TA308647) antibody at 1:200 dilution.



Confocal immunofluorescence analysis (Olympus FV10i) of paraformaldehyde-fixed HeLa, using GOLPH2 (TA308647) antibody (Green) at 1:1000 dilution. Alpha-tubulin filaments were labeled with anti-alpha tubulin antibody (Red) at 1:2500.