

Product datasheet for **TA308644**

MALT1 Rabbit Polyclonal Antibody

Product data:

Product Type:	Primary Antibodies
Applications:	IF, IHC, WB
Recommended Dilution:	ICC/IF:1:100-1:1000; IHC:1:100-1:1000; WB:1:5000-1:20000
Reactivity:	Human
Host:	Rabbit
Isotype:	IgG
Clonality:	Polyclonal
Immunogen:	Recombinant fragment corresponding to a region within amino acids 341 and 609 of MALT1 (Uniprot ID#Q9UDY8)
Formulation:	0.1M Tris, 0.1M Glycine, 10% Glycerol (pH7). 0.01% Thimerosal was added as a preservative.
Concentration:	lot specific
Purification:	Purified by antigen-affinity chromatography.
Conjugation:	Unconjugated
Storage:	Store at -20°C as received.
Stability:	Stable for 12 months from date of receipt.
Predicted Protein Size:	91 kDa
Gene Name:	MALT1 paracaspase
Database Link:	NP_776216 Entrez Gene 10892 Human Q9UDY8
Background:	This gene has been found to be recurrently rearranged in chromosomal translocation with two other genes - baculoviral IAP repeat-containing protein 3 (also known as apoptosis inhibitor 2) and immunoglobulin heavy chain locus - in mucosa-associated lymphoid tissue lymphomas. The protein encoded by this gene may play a role in NF-kappaB activation. Two alternatively spliced transcript variants encoding different isoforms have been described for this gene. [provided by RefSeq]
Synonyms:	IMD12; MLT; MLT1

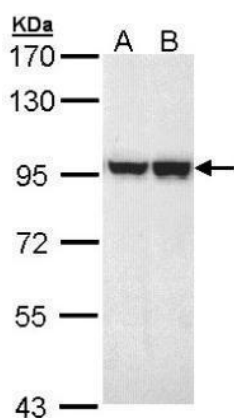


[View online »](#)

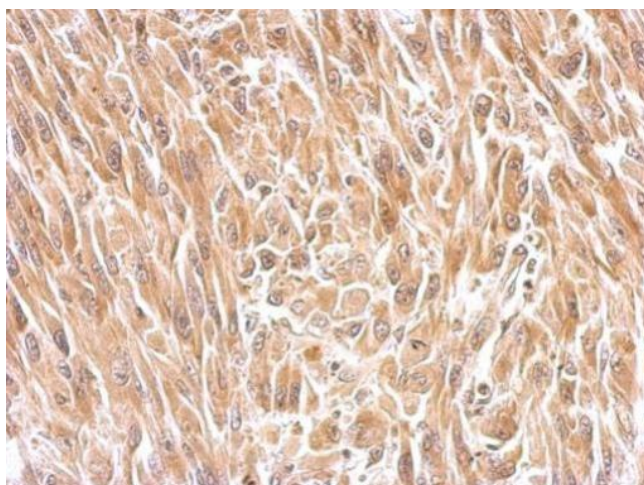
Protein Families: Druggable Genome, Protease

Protein Pathways: B cell receptor signaling pathway, T cell receptor signaling pathway

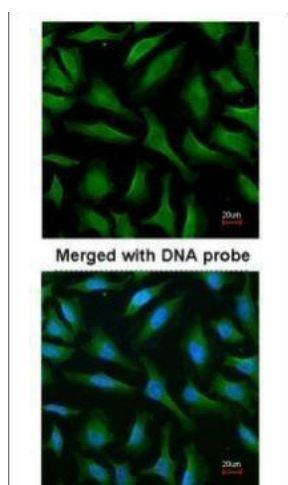
Product images:



Sample (30 ug of whole cell lysate). A: HeLa. B: Hep G2. 10% SDS PAGE. TA308644 diluted at 1:10000



MALT1 antibody [N3C2], Internal detects MALT1 protein at cytosol on U87 xenograft by immunohistochemical analysis. Sample: Paraffin-embedded U87 xenograft. MALT1 antibody [N3C2], Internal (TA308644) dilution: 1:500.



Immunofluorescence analysis of paraformaldehyde-fixed HeLa, using MALT1 (TA308644) antibody at 1:200 dilution.