

Product datasheet for **TA308642**

SH3 containing Grb 2 like 1 protein (SH3GL1) Rabbit Polyclonal Antibody

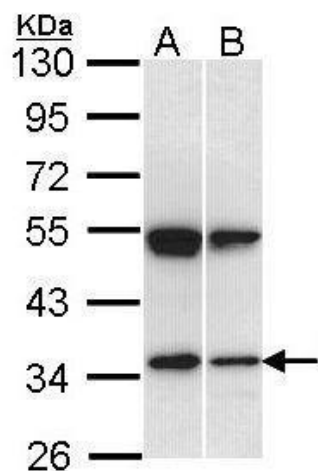
Product data:

Product Type:	Primary Antibodies
Applications:	IF, IHC, WB
Recommended Dilution:	ICC/IF:1:100-1:1000; IHC:1:100-1:1000; WB:1:500-1:3000
Reactivity:	Human (Predicted: Mouse, Chicken, Rat, Bovine)
Host:	Rabbit
Isotype:	IgG
Clonality:	Polyclonal
Immunogen:	Recombinant fragment corresponding to a region within amino acids 152 and 368 of EEN (Uniprot ID#Q99961)
Formulation:	0.1M Tris, 0.1M Glycine, 20% Glycerol (pH7). 0.01% Thimerosal was added as a preservative.
Concentration:	lot specific
Purification:	Purified by antigen-affinity chromatography.
Conjugation:	Unconjugated
Storage:	Store at -20°C as received.
Stability:	Stable for 12 months from date of receipt.
Predicted Protein Size:	42 kDa
Gene Name:	SH3 domain containing GRB2 like 1, endophilin A2
Database Link:	NP_003016 Entrez Gene 20405 Mouse Entrez Gene 81922 Rat Entrez Gene 6455 Human Q99961
Synonyms:	CNSA1; EEN; SH3D2B; SH3P8
Note:	Seq homology of immunogen across species: Mouse (89%), Chicken (85%), Rat (87%), Bovine (93%)
Protein Families:	Druggable Genome
Protein Pathways:	Endocytosis

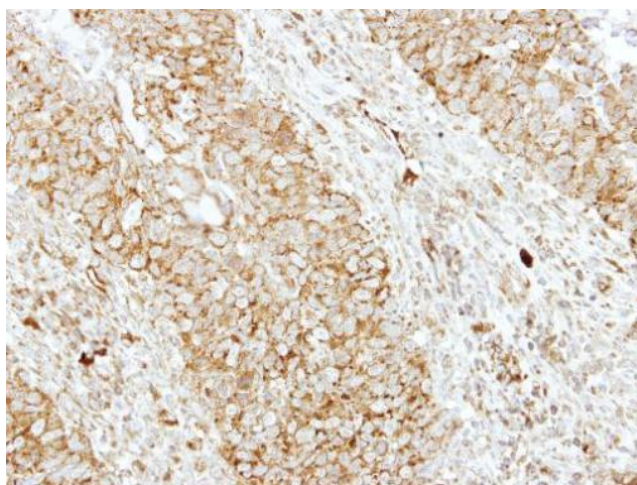


[View online »](#)

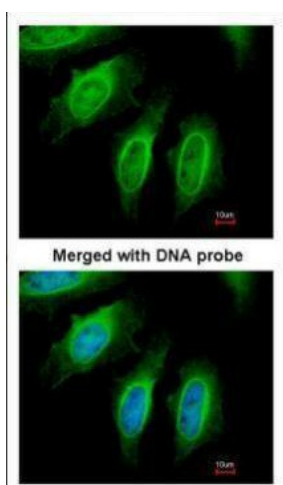
Product images:



Sample (30 ug of whole cell lysate). A: Hep G2. B: Raji. 10% SDS PAGE. TA308642 diluted at 1:1000.



Immunohistochemical analysis of paraffin-embedded Breast ca, using EEN (TA308642) antibody at 1:250 dilution.



Immunofluorescence analysis of paraformaldehyde-fixed HeLa, using SH3GL1 (TA308642) antibody at 1:200 dilution.