

Product datasheet for **TA308641**

PLA2G12A Rabbit Polyclonal Antibody

Product data:

Product Type:	Primary Antibodies
Applications:	WB
Recommended Dilution:	WB:1:500-1:3000
Reactivity:	Human (Predicted: Rat, Bovine, Rhesus Monkey, Mouse)
Host:	Rabbit
Isotype:	IgG
Clonality:	Polyclonal
Immunogen:	Synthetic peptide corresponding to a region within amino acids 22 and 115 of PLA2G12A (Uniprot ID#Q9BZM1)
Formulation:	0.1M Tris, 0.1M Glycine, 10% Glycerol (pH7). 0.01% Thimerosal was added as a preservative.
Concentration:	lot specific
Purification:	Purified by antigen-affinity chromatography.
Conjugation:	Unconjugated
Storage:	Store at -20°C as received.
Stability:	Stable for 12 months from date of receipt.
Predicted Protein Size:	21 kDa
Gene Name:	phospholipase A2 group XIIA
Database Link:	NP_110448 Entrez Gene 66350 Mouse Entrez Gene 362039 Rat Entrez Gene 81579 Human Q9BZM1
Background:	Secreted phospholipase A2 (sPLA2) enzymes liberate arachidonic acid from phospholipids for production of eicosanoids and exert a variety of physiologic and pathologic effects. Group XII sPLA2s, such as PLA2G12A, have relatively low specific activity and are structurally and functionally distinct from other sPLA2s (Gelb et al., 2000 [PubMed 11031251]). [supplied by OMIM]
Synonyms:	GXII; PLA2G12; ROSSY



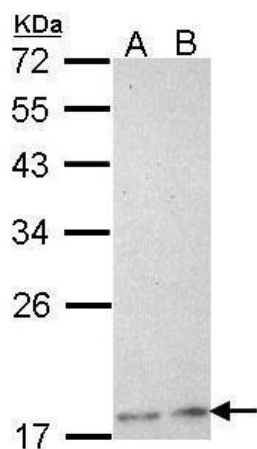
[View online »](#)

Note: Seq homology of immunogen across species: Mouse (93%), Rat (93%), Rhesus Monkey (100%), Bovine (100%)

Protein Families: Druggable Genome, Secreted Protein

Protein Pathways: alpha-Linolenic acid metabolism, Arachidonic acid metabolism, Ether lipid metabolism, Fc epsilon RI signaling pathway, Glycerophospholipid metabolism, GnRH signaling pathway, Linoleic acid metabolism, Long-term depression, MAPK signaling pathway, Metabolic pathways, Vascular smooth muscle contraction, VEGF signaling pathway

Product images:



Sample (30 ug of whole cell lysate). A: H1299. B: HeLa. 12% SDS PAGE. TA308641 diluted at 1:1000.