

Product datasheet for **TA308640**

PRAK (MAPKAPK5) Rabbit Polyclonal Antibody

Product data:

Product Type:	Primary Antibodies
Applications:	IF, WB
Recommended Dilution:	ICC/IF:1:100-1:1000; WB:1:500-1:3000
Reactivity:	Human (Predicted: Mouse, Chicken, Pig, Rat, X. tropicalis)
Host:	Rabbit
Isotype:	IgG
Clonality:	Polyclonal
Immunogen:	Recombinant fragment contain a sequence corresponding to a region within amino acids 197 and 457 of PRAK (Uniprot ID#Q8IW41)
Formulation:	0.1M Tris, 0.1M Glycine, 10% Glycerol (pH7). 0.01% Thimerosal was added as a preservative.
Concentration:	lot specific
Purification:	Purified by antigen-affinity chromatography.
Conjugation:	Unconjugated
Storage:	Store at -20°C as received.
Stability:	Stable for 12 months from date of receipt.
Predicted Protein Size:	54 kDa
Gene Name:	mitogen-activated protein kinase-activated protein kinase 5
Database Link:	NP_620777 Entrez Gene 17165 MouseEntrez Gene 498183 RatEntrez Gene 8550 Human Q8IW41
Background:	The protein encoded by this gene is a member of the serine/threonine kinase family. In response to cellular stress and proinflammatory cytokines, this kinase is activated through its phosphorylation by MAP kinases including MAPK1/ERK, MAPK14/p38-alpha, and MAPK11/p38-beta. In vitro, this kinase phosphorylates heat shock protein HSP27 at its physiologically relevant sites. Two alternately spliced transcript variants of this gene encoding distinct isoforms have been reported. [provided by RefSeq]
Synonyms:	MAPKAP-K5; MK-5; MK5; PRAK



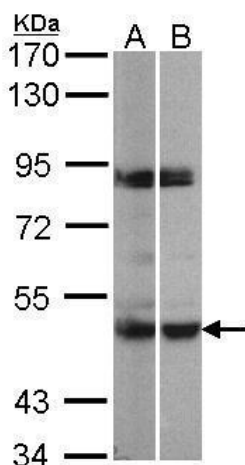
[View online »](#)

Note: Seq homology of immunogen across species: Mouse (96%), Chicken (95%), Pig (97%), Rat (96%), Xenopus tropicalis (90%)

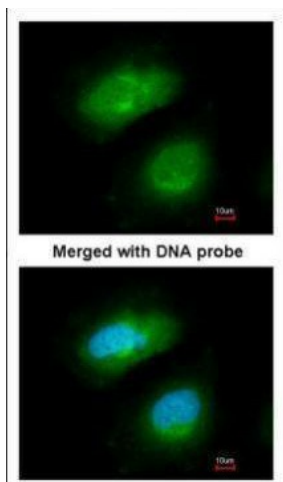
Protein Families: Druggable Genome, Protein Kinase

Protein Pathways: MAPK signaling pathway

Product images:



Sample (30 ug of whole cell lysate). A:293T. B:H1299. 7.5% SDS PAGE. TA308640 diluted at 1:500



Immunofluorescence analysis of paraformaldehyde-fixed HeLa, using PRAK (TA308640) antibody at 1:200 dilution.