

Product datasheet for **TA308639**

SERPINB6 Rabbit Polyclonal Antibody

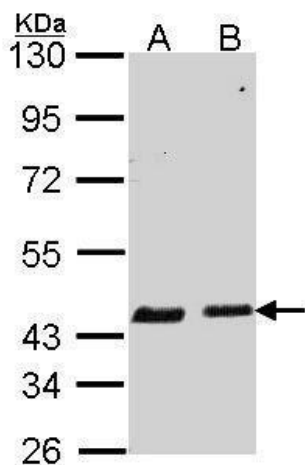
Product data:

Product Type:	Primary Antibodies
Applications:	IF, IHC, WB
Recommended Dilution:	ICC/IF:1:100-1:1000; IHC:1:100-1:1000; WB:1:500-1:3000
Reactivity:	Human (Predicted: Monkey)
Host:	Rabbit
Isotype:	IgG
Clonality:	Polyclonal
Immunogen:	Recombinant fragment corresponding to a region within amino acids 66 and 313 of SERPINB6 (Uniprot ID#P35237)
Formulation:	0.1M Tris, 0.1M Glycine, 20% Glycerol (pH7). 0.01% Thimerosal was added as a preservative.
Concentration:	lot specific
Purification:	Purified by antigen-affinity chromatography.
Conjugation:	Unconjugated
Storage:	Store at -20°C as received.
Stability:	Stable for 12 months from date of receipt.
Predicted Protein Size:	43 kDa
Gene Name:	serpin family B member 6
Database Link:	NP_004559 Entrez Gene 716411 Monkey Entrez Gene 5269 Human P35237
Synonyms:	CAP; DFNB91; MSTP057; PI-6; PI6; PTI; SPI3
Note:	Seq homology of immunogen across species: Monkey (95%)
Protein Families:	Druggable Genome

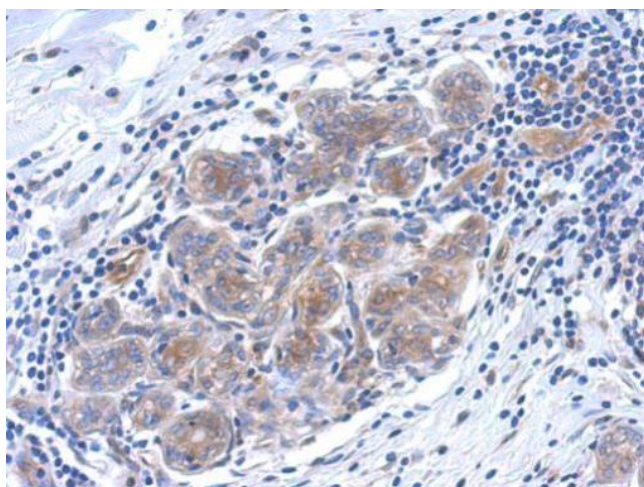


[View online »](#)

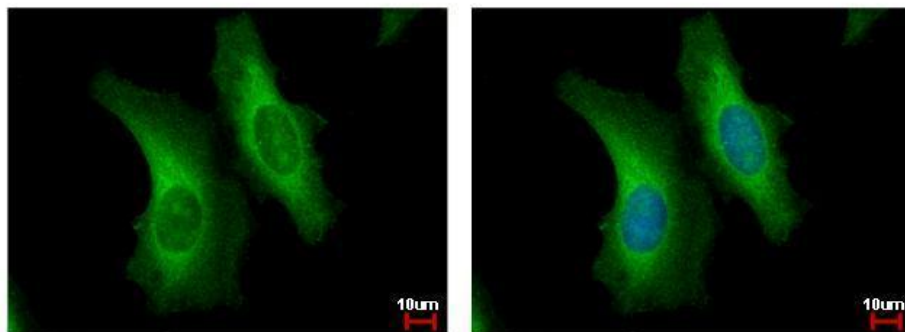
Product images:



Sample (30 ug of whole cell lysate). A: A549. B: HeLa. 10% SDS PAGE. TA308639 diluted at 1:1000.



Immunohistochemical analysis of paraffin-embedded breast ca, using SERPINB6 antibody (TA308639) antibody at 1:500 dilution.



SERPINB6 antibody [N2C2], Internal detects SERPINB6 protein at cytoplasm by immunofluorescent analysis. Sample: HeLa cells were fixed in 4% paraformaldehyde at RT for 15 min. Green: SERPINB6 protein stained by SERPINB6 antibody [N2C2], Internal (TA308639)