

Product datasheet for **TA308635**

WNT10A Rabbit Polyclonal Antibody

Product data:

Product Type:	Primary Antibodies
Applications:	IF, WB
Recommended Dilution:	ICC/IF:1:100-1:1000; WB:1:500-1:3000
Reactivity:	Human (Predicted: Mouse, Rat, Bovine)
Host:	Rabbit
Isotype:	IgG
Clonality:	Polyclonal
Immunogen:	Recombinant fragment corresponding to a region within amino acids 47 and 271 of WNT10A (Uniprot ID#Q9GZT5)
Formulation:	0.1M Tris, 0.1M Glycine, 10% Glycerol (pH7). 0.01% Thimerosal was added as a preservative.
Purification:	Purified by antigen-affinity chromatography.
Conjugation:	Unconjugated
Storage:	Store at -20°C as received.
Stability:	Stable for 12 months from date of receipt.
Predicted Protein Size:	46 kDa
Gene Name:	Wnt family member 10A
Database Link:	NP_079492 Entrez Gene 22409 Mouse Entrez Gene 316527 Rat Entrez Gene 80326 Human Q9GZT5

Background: The WNT gene family consists of structurally related genes which encode secreted signaling proteins. These proteins have been implicated in oncogenesis and in several developmental processes, including regulation of cell fate and patterning during embryogenesis. This gene is a member of the WNT gene family. It is strongly expressed in the cell lines of promyelocytic leukemia and Burkitt's lymphoma. In addition, it and another family member, the WNT6 gene, are strongly coexpressed in colorectal cancer cell lines. The gene overexpression may play key roles in carcinogenesis through activation of the WNT-beta-catenin-TCF signaling pathway. This gene and the WNT6 gene are clustered in the chromosome 2q35 region. [provided by RefSeq]



[View online »](#)

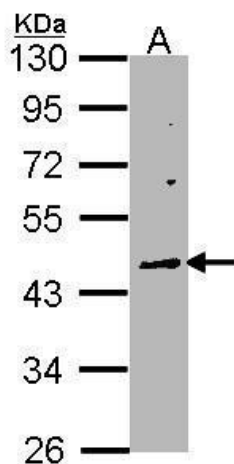
Synonyms: OODD; SSPS; STHAG4

Note: Seq homology of immunogen across species: Mouse (96%), Rat (97%), Bovine (96%)

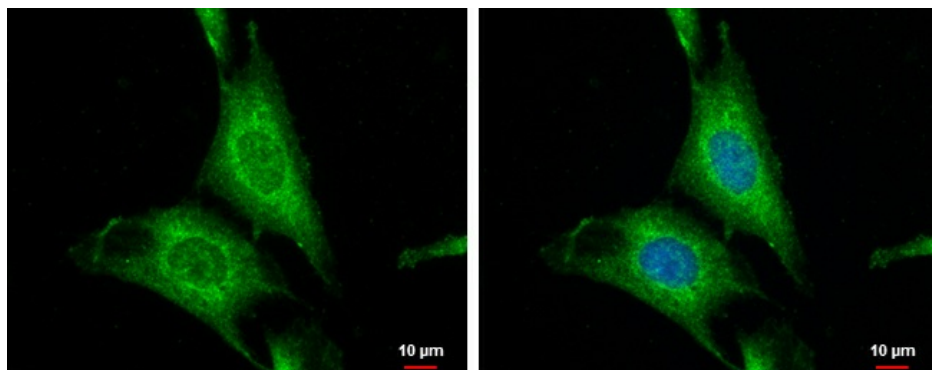
Protein Families: Secreted Protein, Transmembrane

Protein Pathways: Basal cell carcinoma, Hedgehog signaling pathway, Melanogenesis, Pathways in cancer, Wnt signaling pathway

Product images:



Sample (30 ug of whole cell lysate). A: Raji. 10% SDS PAGE. TA308635 diluted at 1:1000.



WNT10A antibody [N1C1-2] detects WNT10A protein at cytoplasm by immunofluorescent analysis. Sample: SKNSH cells were fixed in 4% paraformaldehyde at RT for 15 min. Green: WNT10A protein stained by WNT10A antibody [N1C1-2] (TA308635) diluted at 1:500. Blue