

## Product datasheet for **TA308634**

### NAT2 Rabbit Polyclonal Antibody

#### Product data:

Product Type:	Primary Antibodies
Applications:	IHC, WB
Recommended Dilution:	IHC:1:100-1:1000; WB:1:500-1:3000
Reactivity:	Human (Predicted: Monkey)
Host:	Rabbit
Isotype:	IgG
Clonality:	Polyclonal
Immunogen:	Recombinant fragment corresponding to a region within amino acids 1 and 198 of NAT2 (Uniprot ID#P11245)
Formulation:	0.1M Tris, 0.1M Glycine, 20% Glycerol (pH7). 0.01% Thimerosal was added as a preservative.
Concentration:	lot specific
Purification:	Purified by antigen-affinity chromatography.
Conjugation:	Unconjugated
Storage:	Store at -20°C as received.
Stability:	Stable for 12 months from date of receipt.
Predicted Protein Size:	34 kDa
Gene Name:	N-acetyltransferase 2 (arylamine N-acetyltransferase)
Database Link:	<a href="#">NP_000006</a> <a href="#">Entrez Gene 704357 Monkey</a> <a href="#">Entrez Gene 10 Human</a> <a href="#">P11245</a>
Background:	This gene encodes an enzyme that functions to both activate and deactivate arylamine and hydrazine drugs and carcinogens. Polymorphisms in this gene are responsible for the N-acetylation polymorphism in which human populations segregate into rapid, intermediate, and slow acetylator phenotypes. Polymorphisms in this gene are also associated with higher incidences of cancer and drug toxicity. A second arylamine N-acetyltransferase gene (NAT1) is located near this gene (NAT2). [provided by RefSeq]
Synonyms:	AAC2; NAT-2; PNAT

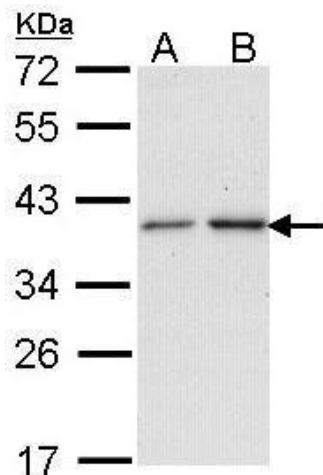

[View online »](#)

**Note:** Seq homology of immunogen across species: Monkey (91%)

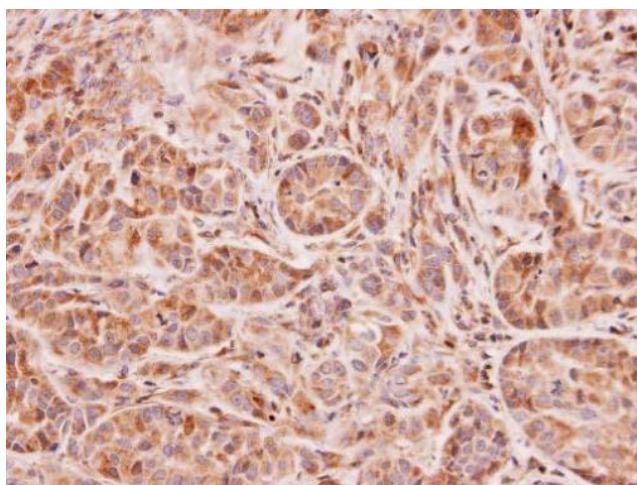
**Protein Families:** Transmembrane

**Protein Pathways:** Caffeine metabolism, Drug metabolism - other enzymes, Metabolic pathways

**Product images:**



Sample (30 ug of whole cell lysate). A: A431. B: H1299. 12% SDS PAGE. TA308634 diluted at 1:1000.



Immunohistochemical analysis of paraffin-embedded A549 xenograft, using NAT2 (TA308634) antibody at 1:100 dilution.