

## Product datasheet for **TA308633**

### CTDSP2 Rabbit Polyclonal Antibody

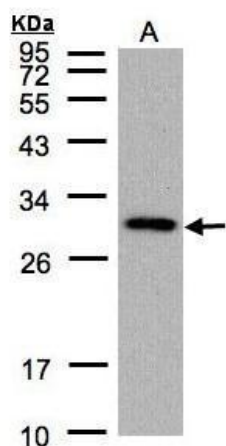
#### Product data:

Product Type:	Primary Antibodies
Applications:	WB
Recommended Dilution:	WB:1:500-1:3000
Reactivity:	Human, Mouse (Predicted: Rhesus Monkey)
Host:	Rabbit
Isotype:	IgG
Clonality:	Polyclonal
Immunogen:	Recombinant fragment corresponding to a region within amino acids 26 and 271 of CTDSP2 (Uniprot ID#O14595)
Formulation:	0.1M Tris, 0.1M Glycine, 10% Glycerol (pH7). 0.01% Thimerosal was added as a preservative.
Concentration:	lot specific
Purification:	Purified by antigen-affinity chromatography.
Conjugation:	Unconjugated
Storage:	Store at -20°C as received.
Stability:	Stable for 12 months from date of receipt.
Predicted Protein Size:	31 kDa
Gene Name:	CTD small phosphatase 2
Database Link:	<a href="#">NP_005721</a> <a href="#">Entrez Gene 52468 Mouse</a> <a href="#">Entrez Gene 10106 Human</a> <a href="#">O14595</a>
Synonyms:	OS4; PSR2; SCP2
Note:	Seq homology of immunogen across species: Rhesus Monkey (100%)
Protein Families:	Druggable Genome, Phosphatase

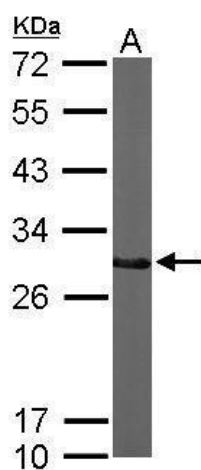


[View online »](#)

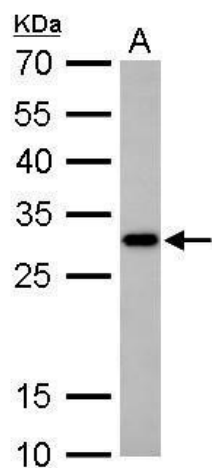
## Product images:



Sample (30 ug of whole cell lysate). A: 293T. 12% SDS PAGE. CTDSP2 antibody. TA308633 diluted at 1:1000.



Sample (50 ug of whole cell lysate). A: Mouse brain. 12% SDS PAGE. TA308633 diluted at 1:1000.



CTDSP2 antibody detects CTDSP2 protein by Western blot analysis. A. 30 ug PC-12 whole cell lysate/extract. 12 % SDS-PAGE. CTDSP2 antibody (TA308633) dilution: 1:1000