

Product datasheet for **TA308627**

HOMER3 Rabbit Polyclonal Antibody

Product data:

Product Type:	Primary Antibodies
Applications:	IF, IHC, WB
Recommended Dilution:	ICC/IF:1:100-1:1000; IHC:1:100-1:1000; WB:1:500-1:3000
Reactivity:	Human (Predicted: Mouse, Rat)
Host:	Rabbit
Isotype:	IgG
Clonality:	Polyclonal
Immunogen:	Recombinant fragment corresponding to a region within amino acids 55 and 305 of Homer3 (Uniprot ID#Q9NSC5)
Formulation:	0.1M Tris, 0.1M Glycine, 20% Glycerol (pH7). 0.01% Thimerosal was added as a preservative.
Concentration:	lot specific
Purification:	Purified by antigen-affinity chromatography.
Conjugation:	Unconjugated
Storage:	Store at -20°C as received.
Stability:	Stable for 12 months from date of receipt.
Predicted Protein Size:	40 kDa
Gene Name:	homer scaffolding protein 3
Database Link:	NP_001139196 Entrez Gene 26558 Mouse Entrez Gene 29548 Rat Entrez Gene 9454 Human Q9NSC5



[View online »](#)

Background:

This gene encodes a member of the HOMER family of postsynaptic density scaffolding proteins that share a similar domain structure consisting of an N-terminal Enabled/vasodilator-stimulated phosphoprotein homology 1 domain which mediates protein-protein interactions, and a carboxy-terminal coiled-coil domain and two leucine zipper motifs that are involved in self-oligomerization. The encoded protein binds numerous other proteins including group I metabotropic glutamate receptors, inositol 1,4,5-trisphosphate receptors and amyloid precursor proteins and has been implicated in diverse biological functions such as neuronal signaling, T-cell activation and trafficking of amyloid beta peptides. Alternative splicing results in multiple transcript variants.

Synonyms:

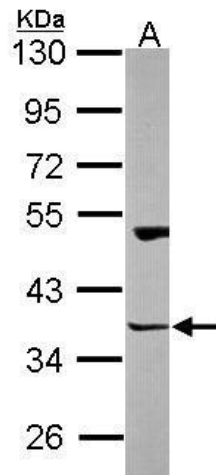
HOMER-3; VESL3

Note:

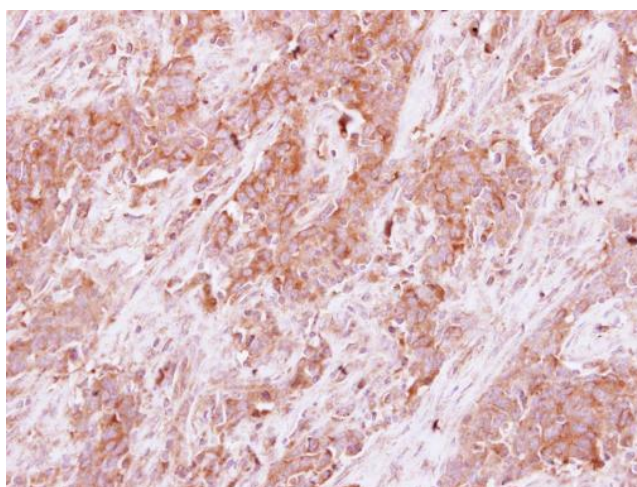
Seq homology of immunogen across species: Mouse (85%), Rat (86%)

Protein Families:

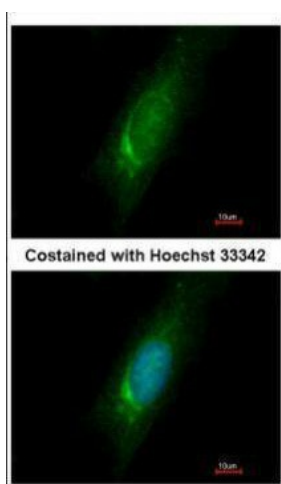
Druggable Genome

Product images:

Sample (30 ug of whole cell lysate). A: NT2D1.
10% SDS PAGE. TA308627 diluted at 1:1000.



Homer3 antibody detects Homer3 protein at cytoplasm on Papillary adenocarcinoma by immunohistochemical analysis. Sample: Paraffin-embedded Papillary adenocarcinoma. Homer3 antibody (TA308627) dilution: 1:250.



Immunofluorescence analysis of methanol-fixed HeLa, using Homer3 (TA308627) antibody at 1:500 dilution.