

Product datasheet for **TA308625**

CDC45L (CDC45) Rabbit Polyclonal Antibody

Product data:

| | |
|-------------------------|---|
| Product Type: | Primary Antibodies |
| Applications: | IF, WB |
| Recommended Dilution: | ICC/IF:1:100-1:1000; WB:1:500-1:3000 |
| Reactivity: | Human (Predicted: Mouse, Bovine) |
| Host: | Rabbit |
| Isotype: | IgG |
| Clonality: | Polyclonal |
| Immunogen: | Recombinant fragment corresponding to a region within amino acids 298 and 566 of CDC45L (Uniprot ID#O75419) |
| Formulation: | 0.1M Tris, 0.1M Glycine, 10% Glycerol (pH7). 0.01% Thimerosal was added as a preservative. |
| Concentration: | lot specific |
| Purification: | Purified by antigen-affinity chromatography. |
| Conjugation: | Unconjugated |
| Storage: | Store at -20°C as received. |
| Stability: | Stable for 12 months from date of receipt. |
| Predicted Protein Size: | 66 kDa |
| Gene Name: | cell division cycle 45 |
| Database Link: | NP_003495 Entrez Gene 12544 Mouse Entrez Gene 8318 Human O75419 |

Background: The protein encoded by this gene was identified by its strong similarity with *Saccharomyces cerevisiae* Cdc45, an essential protein required to the initiation of DNA replication. Cdc45 is a member of the highly conserved multiprotein complex including Cdc6/Cdc18, the minichromosome maintenance proteins (MCMs) and DNA polymerase, which is important for early steps of DNA replication in eukaryotes. This protein has been shown to interact with MCM7 and DNA polymerase alpha. Studies of the similar gene in *Xenopus* suggested that this protein play a pivotal role in the loading of DNA polymerase alpha onto chromatin. Multiple polyadenylation sites of this gene are reported. [provided by RefSeq]



[View online »](#)

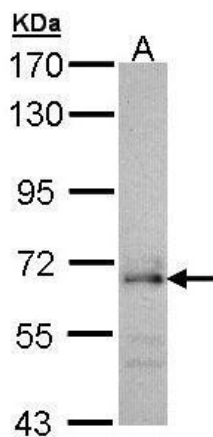
Synonyms: CDC45L; CDC45L2; PORC-PI-1

Note: Seq homology of immunogen across species: Mouse (93%), Bovine (90%)

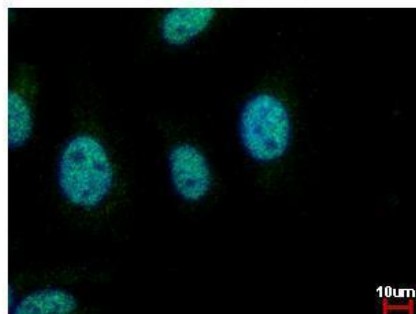
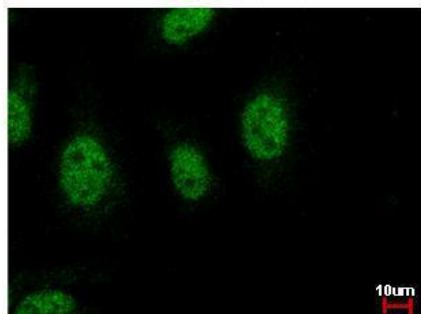
Protein Families: Druggable Genome, Stem cell - Pluripotency

Protein Pathways: Cell cycle

Product images:



Sample (30 ug of whole cell lysate). A: H1299.
7.5% SDS PAGE. TA308625 diluted at 1:1000



CDC45L antibody [C1C3] detects CDC45L protein at nucleus by immunofluorescent analysis.
Sample: HeLa cells were fixed in 4% paraformaldehyde at RT for 15 min. Green: CDC45L protein stained by CDC45L antibody [C1C3] (TA308625) diluted at 1:500. Blue: Hoechst