

## Product datasheet for **TA308624**

### UBE4B Rabbit Polyclonal Antibody

#### Product data:

Product Type:	Primary Antibodies
Applications:	IF, IHC, WB
Recommended Dilution:	ICC/IF:1:100-1:1000; IHC:1:100-1:1000; WB:1:5000-1:20000
Reactivity:	Human (Predicted: Bovine)
Host:	Rabbit
Isotype:	IgG
Clonality:	Polyclonal
Immunogen:	Recombinant fragment corresponding to a region within amino acids 869 and 1179 of UBE4B (Uniprot ID#O95155)
Formulation:	0.1M Tris, 0.1M Glycine, 10% Glycerol (pH7). 0.01% Thimerosal was added as a preservative.
Concentration:	lot specific
Purification:	Purified by antigen-affinity chromatography.
Conjugation:	Unconjugated
Storage:	Store at -20°C as received.
Stability:	Stable for 12 months from date of receipt.
Predicted Protein Size:	133 kDa
Gene Name:	ubiquitination factor E4B
Database Link:	<a href="#">NP_001099032</a> <a href="#">Entrez Gene 10277 Human</a> <a href="#">O95155</a>
Background:	The modification of proteins with ubiquitin is an important cellular mechanism for targeting abnormal or short-lived proteins for degradation. Ubiquitination involves at least three classes of enzymes: ubiquitin-activating enzymes, or E1s, ubiquitin-conjugating enzymes, or E2s, and ubiquitin-protein ligases, or E3s. This gene encodes an additional conjugation factor, E4, which is involved in multiubiquitin chain assembly. This gene is also the strongest candidate in the neuroblastoma tumor suppressor genes. Alternatively spliced transcript variants encoding distinct isoforms have been found for this gene. [provided by RefSeq]
Synonyms:	E4; HDNB1; UBOX3; UFD2; UFD2A

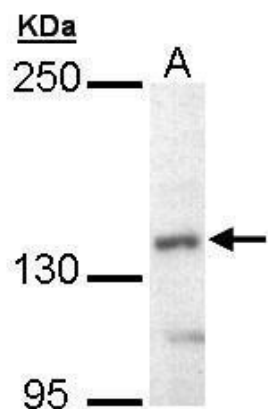


[View online »](#)

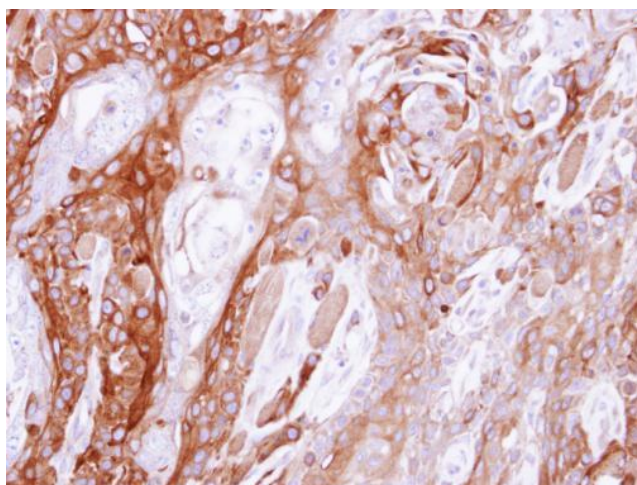
Note: Seq homology of immunogen across species: Bovine (100%)

Protein Pathways: Ubiquitin mediated proteolysis

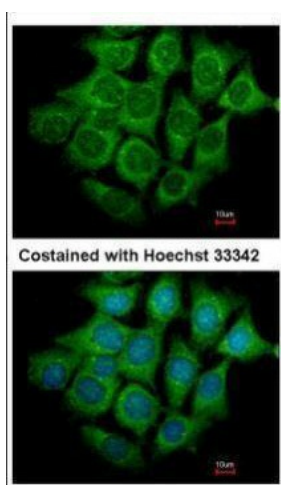
### Product images:



Sample (30 ug of whole cell lysate). A: Hep G2. 5% SDS PAGE. TA308624 diluted at 1:10000



Immunohistochemical analysis of paraffin-embedded CA922 xenograft, using UBE4B (TA308624) antibody at 1:500 dilution.



Immunofluorescence analysis of methanol-fixed Hep3B, using UBE4B (TA308624) antibody at 1:500 dilution.