

Product datasheet for **TA308620**

SERPINA10 Rabbit Polyclonal Antibody

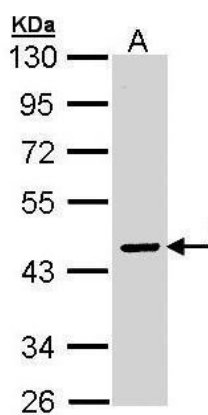
Product data:

Product Type:	Primary Antibodies
Applications:	WB
Recommended Dilution:	WB:1:500-1:3000
Reactivity:	Human (Predicted: Mouse, Rat)
Host:	Rabbit
Isotype:	IgG
Clonality:	Polyclonal
Immunogen:	Recombinant fragment corresponding to a region within amino acids 186 and 444 of SERPINA10 (Uniprot ID#Q9UK55)
Formulation:	0.1M Tris, 0.1M Glycine, 10% Glycerol (pH7). 0.01% Thimerosal was added as a preservative.
Concentration:	lot specific
Purification:	Purified by antigen-affinity chromatography.
Conjugation:	Unconjugated
Storage:	Store at -20°C as received.
Stability:	Stable for 12 months from date of receipt.
Predicted Protein Size:	51 kDa
Gene Name:	serpin family A member 10
Database Link:	NP_001094077 Entrez Gene 171154 RatEntrez Gene 217847 MouseEntrez Gene 51156 Human Q9UK55
Synonyms:	PZI; ZPI
Note:	Seq homology of immunogen across species: Mouse (82%), Rat (82%)
Protein Families:	Druggable Genome, Secreted Protein



[View online »](#)

Product images:



Sample (30 ug of whole cell lysate). A: Molt-4.
10% SDS PAGE. TA308620 diluted at 1:3000