

Product datasheet for **TA308619**

KIDINS220 Rabbit Polyclonal Antibody

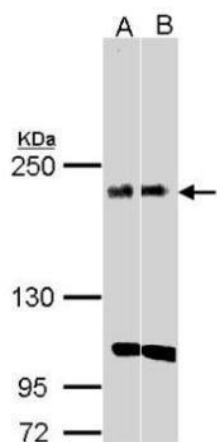
Product data:

Product Type:	Primary Antibodies
Applications:	IHC, WB
Recommended Dilution:	IHC:1:100-1:1000; WB:1:500-1:3000
Reactivity:	Human (Predicted: Rat)
Host:	Rabbit
Isotype:	IgG
Clonality:	Polyclonal
Immunogen:	Synthetic peptide corresponding to a region within amino acids 1706 and 1771 of KIDINS220 (Uniprot ID#Q9ULH0)
Formulation:	0.1M Tris, 0.1M Glycine, 10% Glycerol (pH7). 0.01% Thimerosal was added as a preservative.
Concentration:	lot specific
Purification:	Purified by antigen-affinity chromatography.
Conjugation:	Unconjugated
Storage:	Store at -20°C as received.
Stability:	Stable for 12 months from date of receipt.
Predicted Protein Size:	197 kDa
Gene Name:	kinase D-interacting substrate 220kDa
Database Link:	NP_065789 Entrez Gene 116478 RatEntrez Gene 57498 Human Q9ULH0
Synonyms:	ARMS
Note:	Seq homology of immunogen across species: Rat (100%)
Protein Families:	Druggable Genome, Transmembrane
Protein Pathways:	Neurotrophin signaling pathway

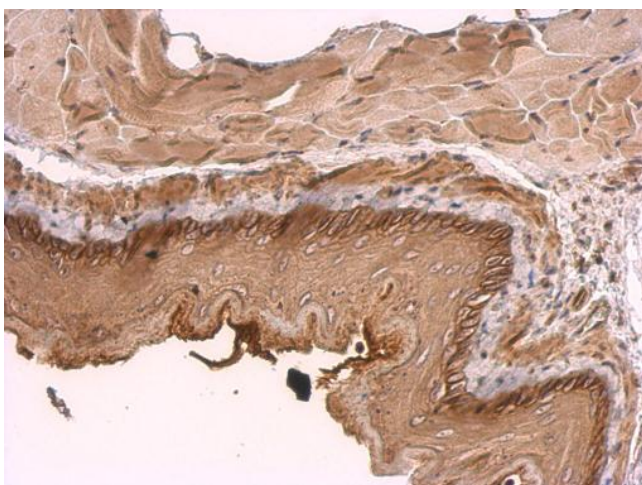


[View online »](#)

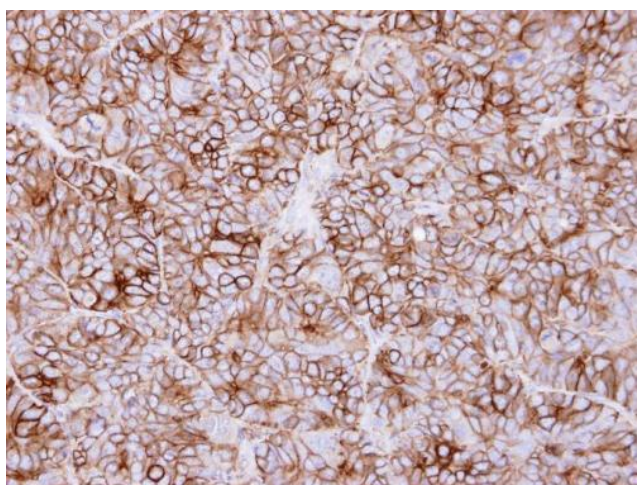
Product images:



Sample (30 ug whole cell lysate). A:H1299. B:Raji.
5% SDS PAGE. TA308619 diluted at 1:1000



KIDINS220 antibody [C3], C-term detects KIDINS220 protein at membrane on mouse esophagus by immunohistochemical analysis. Sample: Paraffin-embedded mouse esophagus. KIDINS220 antibody [C3], C-term (TA308619) dilution: 1:500.



Immunohistochemical analysis of paraffin-embedded SW480 xenograft, using KIDINS220 (TA308619) antibody at 1:500 dilution.