

Product datasheet for **TA308618**

GRAP Rabbit Polyclonal Antibody

Product data:

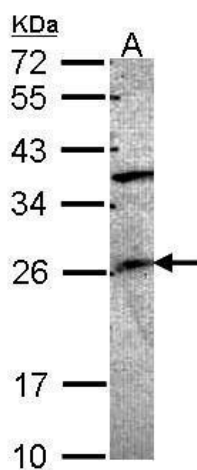
Product Type:	Primary Antibodies
Applications:	IF, IHC, WB
Recommended Dilution:	ICC/IF:1:100-1:1000; IHC:1:100-1:1000; WB:1:500-1:3000
Reactivity:	Human (Predicted: Rat, Bovine, Rhesus Monkey, Mouse)
Host:	Rabbit
Isotype:	IgG
Clonality:	Polyclonal
Immunogen:	Synthetic peptide corresponding to a region within amino acids 155 and 217 of GRAP (Uniprot ID#Q13588)
Formulation:	1XPBS, 40% Glycerol (pH7). 0.01% Thimerosal was added as a preservative.
Concentration:	lot specific
Purification:	Purified by antigen-affinity chromatography.
Conjugation:	Unconjugated
Storage:	Store at -20°C as received.
Stability:	Stable for 12 months from date of receipt.
Predicted Protein Size:	25 kDa
Gene Name:	GRB2-related adaptor protein
Database Link:	NP_006604 Entrez Gene 71520 Mouse Entrez Gene 363616 Rat Entrez Gene 10750 Human Q13588
Background:	This gene encodes a member of the GRB2/Sem5/Drk family. This member functions as a cytoplasmic signaling protein which contains an SH2 domain flanked by two SH3 domains. The SH2 domain interacts with ligand-activated receptors for stem cell factor and erythropoietin, and facilitates the formation of a stable complex with the BCR-ABL oncoprotein. This protein also associates with the Ras guanine nucleotide exchange factor SOS1 (son of sevenless homolog 1) through its N-terminal SH3 domain. [provided by RefSeq]
Synonyms:	MGC64880



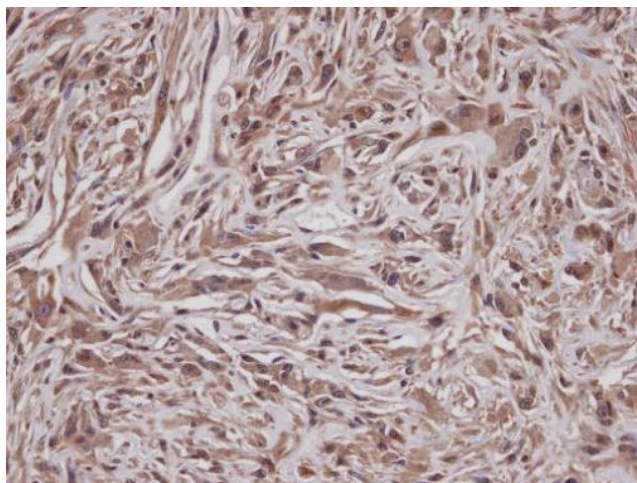
[View online »](#)

Note: Seq homology of immunogen across species: Mouse (100%), Rat (100%), Rhesus Monkey (100%), Bovine (92%)

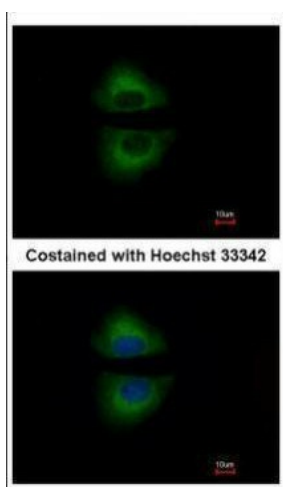
Product images:



Sample (30 ug of whole cell lysate). A: A549 12% SDS PAGE. TA308618 diluted at 1:1000.



Immunohistochemical analysis of paraffin-embedded U373 xenograft, using GRAP (TA308618) antibody at 1:100 dilution.



Immunofluorescence analysis of methanol-fixed A549, using GRAP (TA308618) antibody at 1:500 dilution.