

Product datasheet for **TA308617**

AIP1 (MAGI2) Rabbit Polyclonal Antibody

Product data:

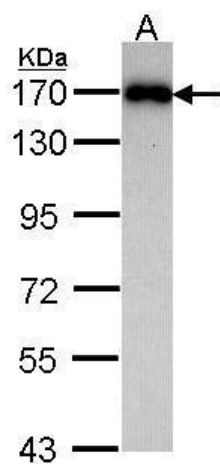
Product Type:	Primary Antibodies
Applications:	WB
Recommended Dilution:	WB:1:500-1:3000
Reactivity:	Human
Host:	Rabbit
Isotype:	IgG
Clonality:	Polyclonal
Immunogen:	Synthetic peptide corresponding to a region within amino acids 1393 and 1455 of MAGI2 (Uniprot ID#Q86UL8)
Formulation:	1XPBS, 10% Glycerol (pH7). 0.01% Thimerosal was added as a preservative.
Concentration:	lot specific
Purification:	Purified by antigen-affinity chromatography.
Conjugation:	Unconjugated
Storage:	Store at -20°C as received.
Stability:	Stable for 12 months from date of receipt.
Predicted Protein Size:	159 kDa
Gene Name:	membrane associated guanylate kinase, WW and PDZ domain containing 2
Database Link:	NP_036433 Entrez Gene 9863 Human Q86UL8
Background:	The protein encoded by this gene interacts with atrophin-1. Atrophin-1 contains a polyglutamine repeat, expansion of which is responsible for dentatorubral and pallidolusian atrophy. This encoded protein is characterized by two WW domains, a guanylate kinase-like domain, and multiple PDZ domains. It has structural similarity to the membrane-associated guanylate kinase homologue (MAGUK) family. [provided by RefSeq]
Synonyms:	ACVRIP1; AIP-1; AIP1; ARIP1; MAGI-2; SSCAM
Protein Families:	Druggable Genome



[View online »](#)

Protein Pathways: Tight junction

Product images:



Sample (30 ug of whole cell lysate). A: Raji. 7.5% SDS PAGE. MAGI-2 antibody. TA308617 diluted at 1:1000.