

Product datasheet for **TA308616**

EML1 Rabbit Polyclonal Antibody

Product data:

Product Type:	Primary Antibodies
Applications:	IF, IHC, WB
Recommended Dilution:	ICC/IF:1:100-1:1000; IHC:1:100-1:1000; WB:1:500-1:3000
Reactivity:	Human, Mouse (Predicted: Zebrafish)
Host:	Rabbit
Isotype:	IgG
Clonality:	Polyclonal
Immunogen:	Synthetic peptide corresponding to a region within amino acids 753 and 815 of EML1 (Uniprot ID#O00423)
Formulation:	1XPBS, 20% Glycerol (pH7). 0.01% Thimerosal was added as a preservative.
Concentration:	lot specific
Purification:	Purified by antigen-affinity chromatography.
Conjugation:	Unconjugated
Storage:	Store at -20°C as received.
Stability:	Stable for 12 months from date of receipt.
Predicted Protein Size:	92 kDa
Gene Name:	echinoderm microtubule associated protein like 1
Database Link:	NP_001008707 Entrez Gene 68519 Mouse Entrez Gene 2009 Human O00423



[View online »](#)

Background:

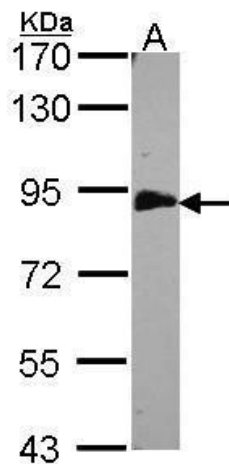
Human echinoderm microtubule-associated protein-like is a strong candidate for the Usher syndrome type 1A gene. Usher syndromes (USHs) are a group of genetic disorders consisting of congenital deafness, retinitis pigmentosa, and vestibular dysfunction of variable onset and severity depending on the genetic type. The disease process in USHs involves the entire brain and is not limited to the posterior fossa or auditory and visual systems. The USHs are categorized as type I (USH1A, USH1B, USH1C, USH1D, USH1E and USH1F), type II (USH2A and USH2B) and type III (USH3). The type I is the most severe form. Gene loci responsible for these three types are all mapped. Two transcript variants encoding different isoforms have been found for this gene. [provided by RefSeq]

Synonyms:

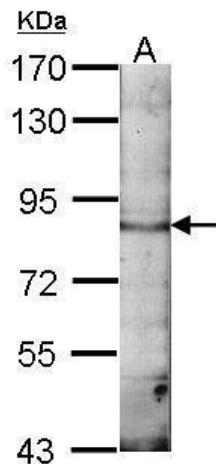
BH; ELP79; EMAP; EMAPL; HuEMAP

Note:

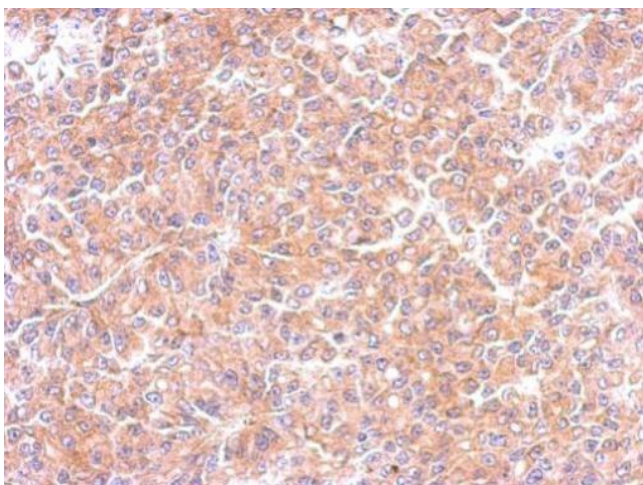
Seq homology of immunogen across species: Zebrafish (85%)

Product images:


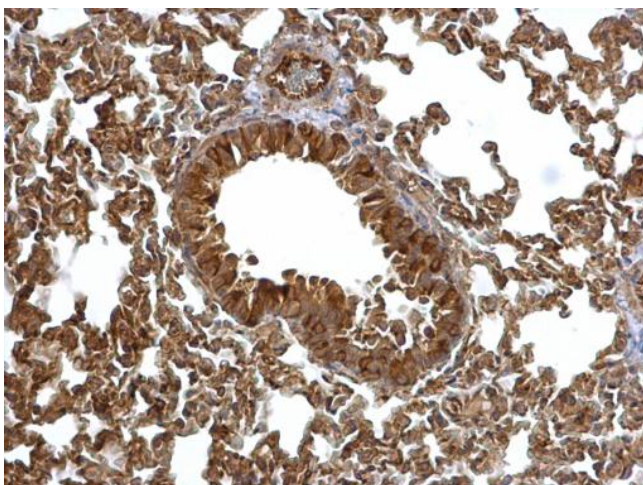
Sample (30 ug of whole cell lysate). A: H1299.
7.5% SDS PAGE. EML1 antibody. TA308616
diluted at 1:500.



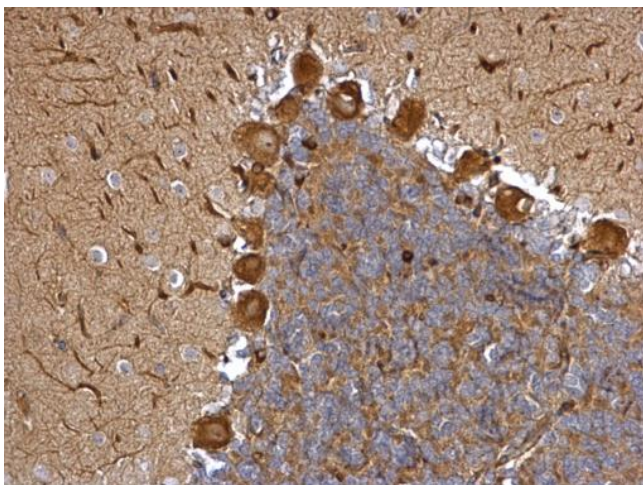
Sample (30 ug of whole cell lysate). A: NIH-3T3.
7.5% SDS PAGE. TA308616 diluted at 1:1000.



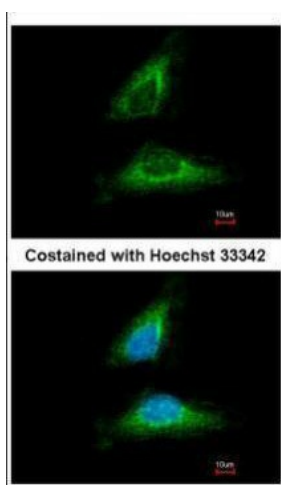
Immunohistochemical analysis of paraffin-embedded RF48 xenograft, using EML1 (TA308616) antibody at 1:500 dilution.



EML1 antibody [C3], C-term detects EML1 protein at cytosol on mouse lung by immunohistochemical analysis. Sample: Paraffin-embedded mouse lung. EML1 antibody [C3], C-term (TA308616) dilution: 1:500.



EML1 antibody [C3], C-term detects EML1 protein at cytosol on rat hind brain by immunohistochemical analysis. Sample: Paraffin-embedded rat hind brain. EML1 antibody [C3], C-term (TA308616) dilution: 1:500.



Immunofluorescence analysis of methanol-fixed HeLa, using EML1 (TA308616) antibody at 1:500 dilution.