

## Product datasheet for **TA308614**

### DOK3 Rabbit Polyclonal Antibody

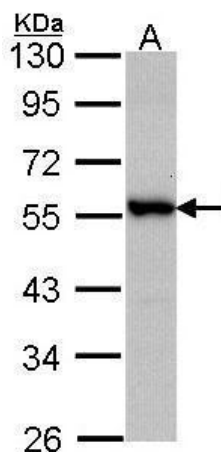
#### Product data:

Product Type:	Primary Antibodies
Applications:	WB
Recommended Dilution:	WB:1:500-1:3000
Reactivity:	Human (Predicted: Mouse, Rat, Bovine)
Host:	Rabbit
Isotype:	IgG
Clonality:	Polyclonal
Immunogen:	Synthetic peptide corresponding to a region within amino acids 434 and 496 of DOK3 (Uniprot ID#Q7L591)
Formulation:	0.1M Tris, 0.1M Glycine, 10% Glycerol (pH7). 0.01% Thimerosal was added as a preservative.
Concentration:	lot specific
Purification:	Purified by antigen-affinity chromatography.
Conjugation:	Unconjugated
Storage:	Store at -20°C as received.
Stability:	Stable for 12 months from date of receipt.
Predicted Protein Size:	53 kDa
Gene Name:	docking protein 3
Database Link:	<a href="#">NP_001138348</a> <a href="#">Entrez Gene 27261 Mouse</a> <a href="#">Entrez Gene 306760 Rat</a> <a href="#">Entrez Gene 79930 Human</a> <a href="#">Q7L591</a>
Synonyms:	DOKL
Note:	Seq homology of immunogen across species: Mouse (92%), Rat (92%), Bovine (92%)
Protein Families:	Druggable Genome



[View online »](#)

## Product images:



Sample (30 ug of whole cell lysate). A: A431. 10% SDS PAGE. TA308614 diluted at 1:1000.