

Product datasheet for **TA308613**

PPP2R5B Rabbit Polyclonal Antibody

Product data:

Product Type:	Primary Antibodies
Applications:	WB
Recommended Dilution:	WB:1:500-1:3000
Reactivity:	Human (Predicted: Mouse, Rat)
Host:	Rabbit
Isotype:	IgG
Clonality:	Polyclonal
Immunogen:	Synthetic peptide corresponding to a region within amino acids 434 and 497 of PPP2R5B (Uniprot ID#Q15173)
Formulation:	1XPBS, 10% Glycerol (pH7). 0.01% Thimerosal was added as a preservative.
Concentration:	lot specific
Purification:	Purified by antigen-affinity chromatography.
Conjugation:	Unconjugated
Storage:	Store at -20°C as received.
Stability:	Stable for 12 months from date of receipt.
Predicted Protein Size:	57 kDa
Gene Name:	protein phosphatase 2 regulatory subunit B'beta
Database Link:	NP_006235 Entrez Gene 225849 MouseEntrez Gene 309179 RatEntrez Gene 5526 Human Q15173
Background:	The product of this gene belongs to the phosphatase 2A regulatory subunit B family. Protein phosphatase 2A is one of the four major Ser/Thr phosphatases, and it is implicated in the negative control of cell growth and division. It consists of a common heteromeric core enzyme, which is composed of a catalytic subunit and a constant regulatory subunit, that associates with a variety of regulatory subunits. The B regulatory subunit might modulate substrate selectivity and catalytic activity. This gene encodes a beta isoform of the regulatory subunit B56 subfamily. [provided by RefSeq]
Synonyms:	B56B; PR61B



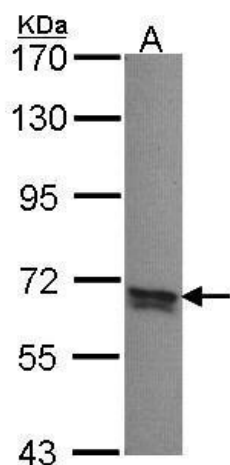
[View online »](#)

Note: Seq homology of immunogen across species: Mouse (92%), Rat (92%)

Protein Families: Druggable Genome, Phosphatase

Protein Pathways: Oocyte meiosis, Wnt signaling pathway

Product images:



Sample (30 ug of whole cell lysate). A: A431. 7.5% SDS PAGE. PPP2R5B antibody. TA308613 diluted at 1:1000.