

Product datasheet for **TA308608**

Apoptosis enhancing nuclease (AEN) Rabbit Polyclonal Antibody

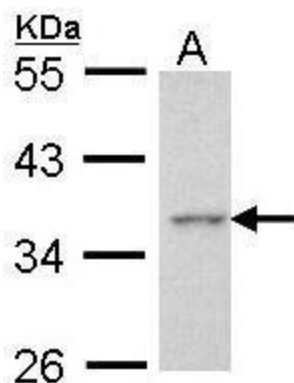
Product data:

Product Type:	Primary Antibodies
Applications:	IF, IHC, WB
Recommended Dilution:	ICC/IF:1:100-1:1000; IHC:1:100-1:1000; WB:1:500-1:3000
Reactivity:	Human (Predicted: Mouse, Rat)
Host:	Rabbit
Isotype:	IgG
Clonality:	Polyclonal
Immunogen:	Synthetic peptide corresponding to a region within amino acids 236 and 325 of Apoptosis-enhancing nuclease (Uniprot ID#Q8WTP8)
Formulation:	0.1M Tris, 0.1M Glycine, 10% Glycerol (pH7). 0.01% Thimerosal was added as a preservative.
Concentration:	lot specific
Purification:	Purified by antigen-affinity chromatography.
Conjugation:	Unconjugated
Storage:	Store at -20°C as received.
Stability:	Stable for 12 months from date of receipt.
Predicted Protein Size:	36 kDa
Gene Name:	apoptosis enhancing nuclease
Database Link:	NP_073604 Entrez Gene 68048 Mouse Entrez Gene 361594 Rat Entrez Gene 64782 Human Q8WTP8
Synonyms:	ISG20L1; pp12744
Note:	Seq homology of immunogen across species: Mouse (83%), Rat (83%)

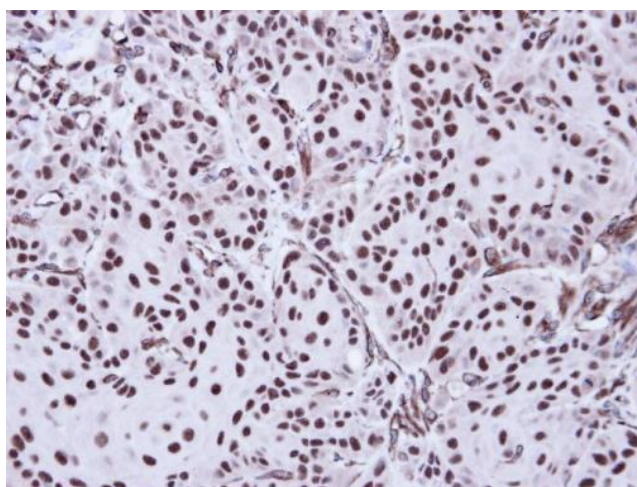


[View online »](#)

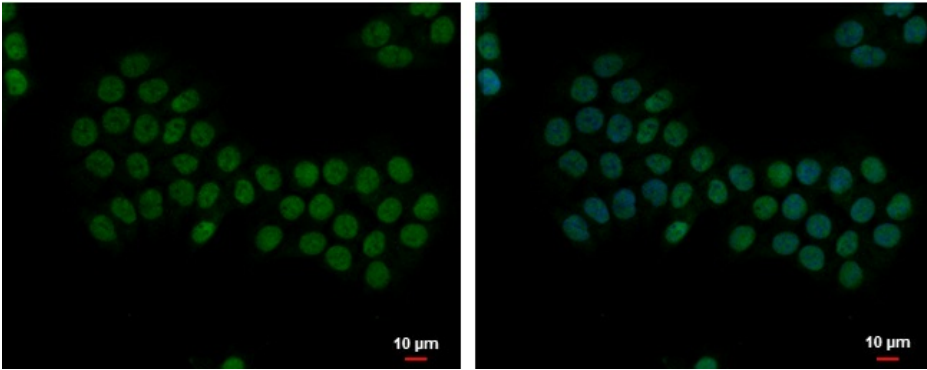
Product images:



Sample (30 ug of whole cell lysate). A: HeLa. 10% SDS PAGE. TA308608 diluted at 1:1000.



Immunohistochemical analysis of paraffin-embedded Cal27 Xenograft, using Apoptosis-enhancing nuclease (TA308608) antibody at 1:100 dilution.



Apoptosis-enhancing nuclease antibody [C2C3], C-term detects Apoptosis-enhancing nuclease protein at nucleus by immunofluorescent analysis. Sample: HCT 116 cells were fixed in 4% paraformaldehyde at RT for 15 min. Green: Apoptosis-enhancing nuclease prote