

## Product datasheet for **TA308606**

### DHH Rabbit Polyclonal Antibody

#### Product data:

Product Type:	Primary Antibodies
Applications:	WB
Recommended Dilution:	WB:1:5000-1:20000
Reactivity:	Human (Predicted: Mouse, Rat)
Host:	Rabbit
Isotype:	IgG
Clonality:	Polyclonal
Immunogen:	Recombinant fragment corresponding to a region within amino acids 135 and 396 of Dhh (Uniprot ID#O43323)
Formulation:	0.1M Tris, 0.1M Glycine, 20% Glycerol (pH7). 0.01% Thimerosal was added as a preservative.
Concentration:	lot specific
Purification:	Purified by antigen-affinity chromatography.
Conjugation:	Unconjugated
Storage:	Store at -20°C as received.
Stability:	Stable for 12 months from date of receipt.
Predicted Protein Size:	44 kDa
Gene Name:	desert hedgehog
Database Link:	<a href="#">NP_066382</a> <a href="#">Entrez Gene 13363 Mouse</a> <a href="#">Entrez Gene 84380 Rat</a> <a href="#">Entrez Gene 50846 Human</a> <a href="#">O43323</a>



[View online »](#)

**Background:** This gene encodes a member of the Hedgehog family. The hedgehog gene family encodes signaling molecules that play an important role in regulating morphogenesis. This protein is predicted to be made as a precursor that is autocatalytically cleaved; the N-terminal portion is soluble and contains the signalling activity while the C-terminal portion is involved in precursor processing. More importantly, the C-terminal product covalently attaches a cholesterol moiety to the N-terminal product, restricting the N-terminal product to the cell surface and preventing it from freely diffusing throughout the organism. Defects in this protein have been associated with partial gonadal dysgenesis (PGD) accompanied by minifascicular polyneuropathy. This protein may be involved in both male gonadal differentiation and perineurial development. [provided by RefSeq]

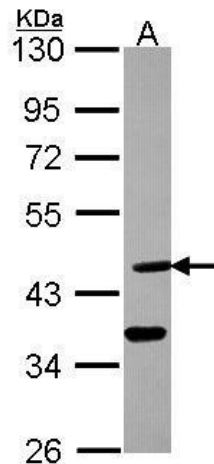
**Synonyms:** GDXYM; HHG-3; SRXY7

**Note:** Seq homology of immunogen across species: Mouse (98%), Rat (98%)

**Protein Families:** Druggable Genome, ES Cell Differentiation/IPS, Protease

**Protein Pathways:** Hedgehog signaling pathway

**Product images:**



Sample (30 ug of whole cell lysate). A: A431 . 10% SDS PAGE. TA308606 diluted at 1:10000.