

Product datasheet for **TA308605**

PSMF1 Rabbit Polyclonal Antibody

Product data:

Product Type:	Primary Antibodies
Applications:	IF, WB
Recommended Dilution:	ICC/IF:1:100-1:1000; WB:1:500-1:3000
Reactivity:	Human (Predicted: Mouse, Rat, Pig, Chicken, Bovine)
Host:	Rabbit
Isotype:	IgG
Clonality:	Polyclonal
Immunogen:	Synthetic peptide corresponding to a region within amino acids 209 and 271 of PSMF1 (Uniprot ID#Q92530)
Formulation:	0.1M Tris, 0.1M Glycine, 20% Glycerol (pH7). 0.01% Thimerosal was added as a preservative.
Concentration:	lot specific
Purification:	Purified by antigen-affinity chromatography.
Conjugation:	Unconjugated
Storage:	Store at -20°C as received.
Stability:	Stable for 12 months from date of receipt.
Predicted Protein Size:	30 kDa
Gene Name:	proteasome inhibitor subunit 1
Database Link:	NP_848693 Entrez Gene 228769 Mouse Entrez Gene 689852 Rat Entrez Gene 9491 Human Q92530



[View online »](#)

Background:

The 26S proteasome is a multicatalytic proteinase complex with a highly ordered structure composed of 2 complexes, a 20S core and a 19S regulator. The 20S core is composed of 4 rings of 28 non-identical subunits; 2 rings are composed of 7 alpha subunits and 2 rings are composed of 7 beta subunits. The 19S regulator is composed of a base, which contains 6 ATPase subunits and 2 non-ATPase subunits, and a lid, which contains up to 10 non-ATPase subunits. Proteasomes are distributed throughout eukaryotic cells at a high concentration and cleave peptides in an ATP/ubiquitin-dependent process in a non-lysosomal pathway. An essential function of a modified proteasome, the immunoproteasome, is the processing of class I MHC peptides. This gene encodes a protein that inhibits the activation of the proteasome by the 11S and 19S regulators. Alternative transcript variants have been identified for this gene. [provided by RefSeq]

Synonyms:

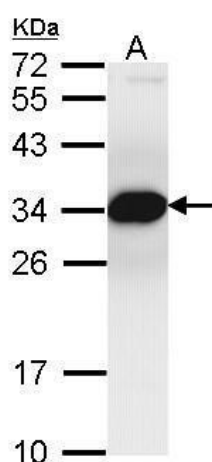
PI31

Note:

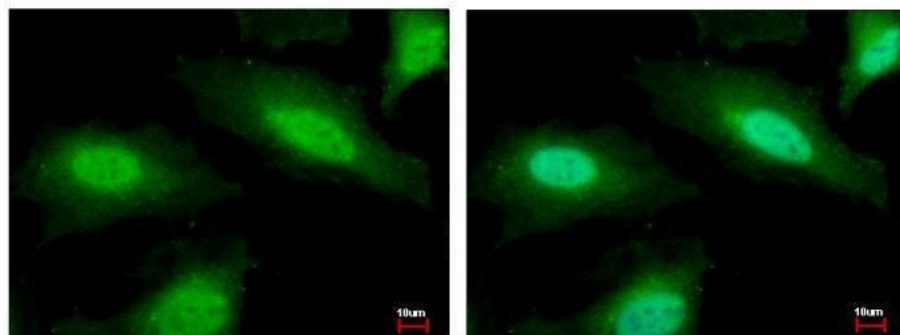
Seq homology of immunogen across species: Mouse (100%), Rat (100%), Pig (100%), Chicken (85%), Bovine (100%)

Protein Pathways:

Proteasome

Product images:

Sample (30 ug of whole cell lysate). A: Hep G2.
12% SDS PAGE. TA308605 diluted at 1:1000.



PSMF1 antibody [C2C3], C-term detects PSMF1 protein at Cytoplasm and Nucleus by immunofluorescent analysis. Sample: HeLa cells were fixed in 4% paraformaldehyde at RT for 15 min. Green: PSMF1 protein stained by PSMF1 antibody [C2C3], C-term (TA308605) dil