

## Product datasheet for **TA308598**

### ALS2CR3 (TRAK2) Rabbit Polyclonal Antibody

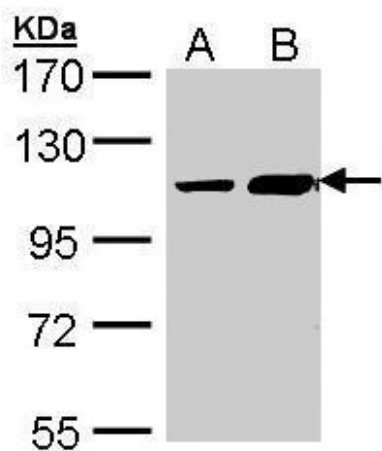
#### Product data:

Product Type:	Primary Antibodies
Applications:	WB
Recommended Dilution:	WB:1:500-1:3000
Reactivity:	Human (Predicted: Bovine, Rhesus Monkey)
Host:	Rabbit
Isotype:	IgG
Clonality:	Polyclonal
Immunogen:	Synthetic peptide corresponding to a region within amino acids 852 and 914 of TRAK2 (Uniprot ID#O60296)
Formulation:	0.1M Tris, 0.1M Glycine, 10% Glycerol (pH7). 0.01% Thimerosal was added as a preservative.
Concentration:	lot specific
Purification:	Purified by antigen-affinity chromatography.
Conjugation:	Unconjugated
Storage:	Store at -20°C as received.
Stability:	Stable for 12 months from date of receipt.
Predicted Protein Size:	101 kDa
Gene Name:	trafficking kinesin protein 2
Database Link:	<a href="#">NP_055864</a> <a href="#">Entrez Gene 66008 Human O60296</a>
Synonyms:	ALS2CR3; CALS-C; GRIF-1; GRIF1; MILT2; OIP98
Note:	Seq homology of immunogen across species: Rhesus Monkey (100%), Bovine (85%)
Protein Families:	Druggable Genome



[View online »](#)

## Product images:



Sample (30 ug of whole cell lysate). A: Hep G2. B: Molt-4. 7.5% SDS PAGE. TA308598 diluted at 1:1000