

## Product datasheet for **TA308597**

### GLIS1 Rabbit Polyclonal Antibody

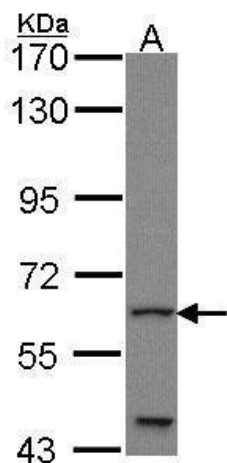
#### Product data:

Product Type:	Primary Antibodies
Applications:	WB
Recommended Dilution:	WB:1:500-1:3000
Reactivity:	Human (Predicted: Mouse)
Host:	Rabbit
Isotype:	IgG
Clonality:	Polyclonal
Immunogen:	Synthetic peptide corresponding to a region within amino acids 559 and 620 of GLIS1 (Uniprot ID#Q8NBF1)
Formulation:	1XPBS, 10% Glycerol (pH7). 0.01% Thimerosal was added as a preservative.
Concentration:	lot specific
Purification:	Purified by antigen-affinity chromatography.
Conjugation:	Unconjugated
Storage:	Store at -20°C as received.
Stability:	Stable for 12 months from date of receipt.
Predicted Protein Size:	66 kDa
Gene Name:	GLIS family zinc finger 1
Database Link:	<a href="#">NP_671726</a> <a href="#">Entrez Gene 230587 Mouse</a> <a href="#">Entrez Gene 148979 Human</a> <a href="#">Q8NBF1</a>
Background:	GLIS1 is a GLI (MIM 165220)-related Kruppel-like zinc finger protein that functions as an activator and repressor of transcription (Kim et al., 2002 [PubMed 12042312]). [supplied by OMIM]
Synonyms:	FLJ36155
Note:	Seq homology of immunogen across species: Mouse (91%)



[View online »](#)

## Product images:



Sample (30 ug of whole cell lysate). A: JurKat.  
7.5% SDS PAGE. TA308597 diluted at 1:1000.