

Product datasheet for **TA308596**

Hsp22 (HSPB8) Rabbit Polyclonal Antibody

Product data:

Product Type:	Primary Antibodies
Applications:	IF, IHC, WB
Recommended Dilution:	ICC/IF:1:100-1:1000; IHC:1:100-1:1000; WB:1:500-1:3000
Reactivity:	Human (Predicted: Rat, Dog, Bovine, Rhesus Monkey, Mouse)
Host:	Rabbit
Isotype:	IgG
Clonality:	Polyclonal
Immunogen:	Synthetic peptide corresponding to a region within amino acids 134 and 196 of HSP22 (Uniprot ID#Q9UJY1)
Formulation:	0.1M Tris, 0.1M Glycine, 10% Glycerol (pH7). 0.01% Thimerosal was added as a preservative.
Concentration:	lot specific
Purification:	Purified by antigen-affinity chromatography.
Conjugation:	Unconjugated
Storage:	Store at -20°C as received.
Stability:	Stable for 12 months from date of receipt.
Predicted Protein Size:	22 kDa
Gene Name:	heat shock protein family B (small) member 8
Database Link:	NP_055180 Entrez Gene 80888 Mouse Entrez Gene 113906 Rat Entrez Gene 403553 Dog Entrez Gene 26353 Human Q9UJY1



[View online »](#)

Background:

The protein encoded by this gene belongs to the superfamily of small heat-shock proteins containing a conservative alpha-crystallin domain at the C-terminal part of the molecule. The expression of this gene is induced by estrogen in estrogen receptor-positive breast cancer cells, and this protein also functions as a chaperone in association with Bag3, a stimulator of macroautophagy. Thus, this gene appears to be involved in regulation of cell proliferation, apoptosis, and carcinogenesis, and mutations in this gene have been associated with different neuromuscular diseases, including Charcot-Marie-Tooth disease. [provided by RefSeq]

Synonyms:

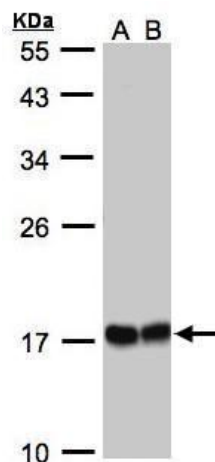
CMT2L; DHMN2; E2IG1; H11; HMN2; HMN2A; HSP22

Note:

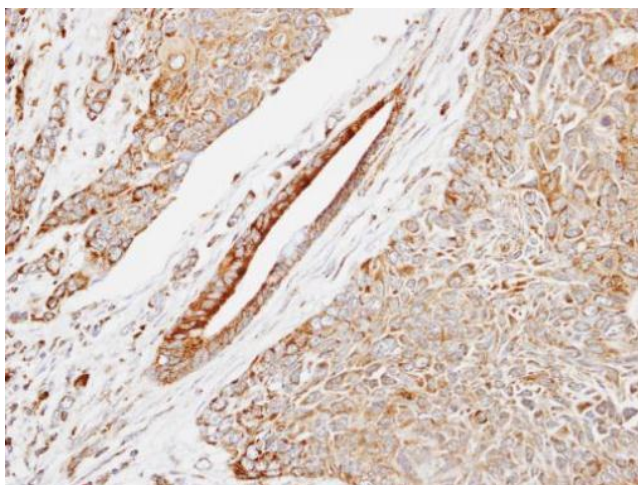
Seq homology of immunogen across species: Mouse (85%), Rat (85%), Dog (100%), Rhesus Monkey (100%), Bovine (92%)

Protein Families:

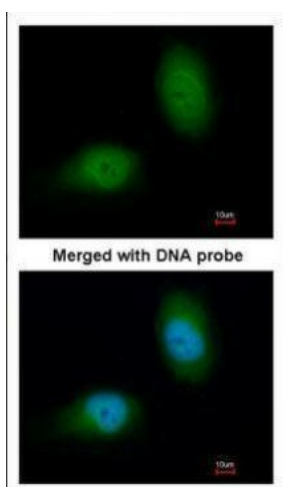
Druggable Genome, Protein Kinase

Product images:

Sample (30 ug whole cell lysate). A:293T whole cell lysate. B:A431. 12% SDS PAGE. TA308596 diluted at 1:1000



Immunohistochemical analysis of paraffin-embedded LUNG SCC, using HSP22 (TA308596) antibody at 1:500 dilution.



Immunofluorescence analysis of paraformaldehyde-fixed HeLa, using HSPB8 (TA308596) antibody at 1:200 dilution.