

## Product datasheet for **TA308594**

### Protease Inhibitor 15 (PI15) Rabbit Polyclonal Antibody

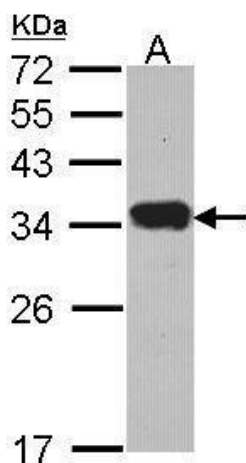
#### Product data:

Product Type:	Primary Antibodies
Applications:	IF, IHC, WB
Recommended Dilution:	ICC/IF:1:100-1:1000; IHC:1:100-1:1000; WB:1:500-1:3000
Reactivity:	Human (Predicted: Rat, Chicken, Bovine, Rhesus Monkey, Mouse)
Host:	Rabbit
Isotype:	IgG
Clonality:	Polyclonal
Immunogen:	Synthetic peptide corresponding to a region within amino acids 195 and 258 of Protease Inhibitor 15 (Uniprot ID#O43692)
Formulation:	0.1M Tris, 0.1M Glycine, 20% Glycerol (pH7). 0.01% Thimerosal was added as a preservative.
Concentration:	lot specific
Purification:	Purified by antigen-affinity chromatography.
Conjugation:	Unconjugated
Storage:	Store at -20°C as received.
Stability:	Stable for 12 months from date of receipt.
Predicted Protein Size:	29 kDa
Gene Name:	peptidase inhibitor 15
Database Link:	<a href="#">NP_056970</a> <a href="#">Entrez Gene 94227 Mouse</a> <a href="#">Entrez Gene 301489 Rat</a> <a href="#">Entrez Gene 51050 Human</a> <a href="#">O43692</a>
Background:	This gene encodes a trypsin inhibitor. The protein shares similarity to insect venom allergens, mammalian testis-specific proteins and plant pathogenesis-related proteins. It is frequently expressed in human neuroblastoma and glioblastoma cell lines, and thus may play a role in the central nervous system. [provided by RefSeq]
Synonyms:	CRISP8; P24TI; P25TI
Note:	Seq homology of immunogen across species: Mouse (93%), Rat (93%), Chicken (100%), Rhesus Monkey (100%), Bovine (100%)

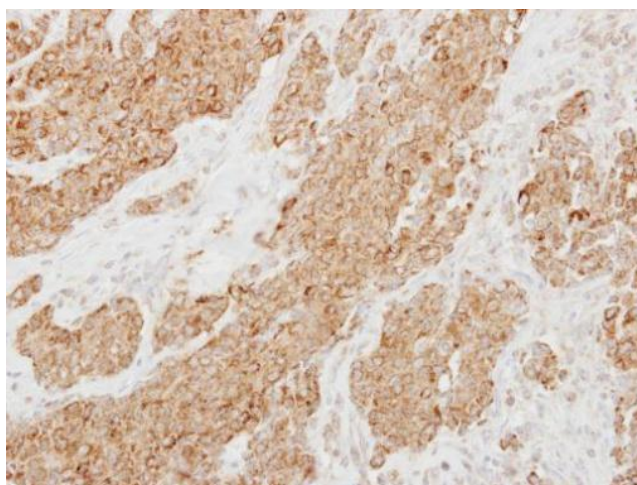


[View online »](#)

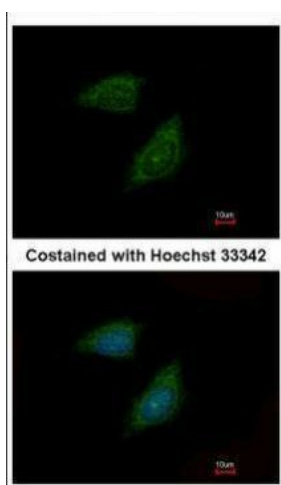
## Product images:



Sample (30 ug of whole cell lysate). A: HeLa. 12% SDS PAGE. Protease Inhibitor 15 antibody. TA308594 diluted at 1:1000.



Immunohistochemical analysis of paraffin-embedded Breast ca, using Protease Inhibitor 15 (TA308594) antibody at 1:250 dilution.



Immunofluorescence analysis of methanol-fixed HeLa, using Protease Inhibitor 15 (TA308594) antibody at 1:500 dilution.