

Product datasheet for **TA308593**

TFEB Rabbit Polyclonal Antibody

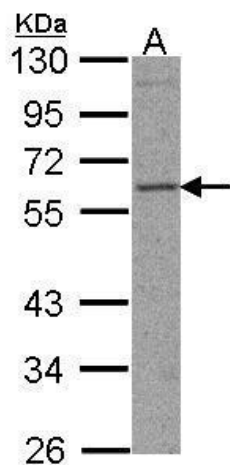
Product data:

Product Type:	Primary Antibodies
Applications:	WB
Recommended Dilution:	WB:1:500-1:3000
Reactivity:	Human (Predicted: Rat, Rabbit, Bovine, Rhesus Monkey, X. tropicalis, Mouse)
Host:	Rabbit
Isotype:	IgG
Clonality:	Polyclonal
Immunogen:	Synthetic peptide corresponding to a region within amino acids 1 and 44 of TFEB (Uniprot ID#P19484)
Formulation:	0.1M Tris, 0.1M Glycine, 10% Glycerol (pH7). 0.01% Thimerosal was added as a preservative.
Concentration:	lot specific
Purification:	Purified by antigen-affinity chromatography.
Conjugation:	Unconjugated
Storage:	Store at -20°C as received.
Stability:	Stable for 12 months from date of receipt.
Predicted Protein Size:	53 kDa
Gene Name:	transcription factor EB
Database Link:	NP_009093 Entrez Gene 21425 Mouse Entrez Gene 316214 Rat Entrez Gene 7942 Human P19484
Synonyms:	ALPHATFEB; BHLHE35; TCFEB
Note:	Seq homology of immunogen across species: Mouse (100%), Rat (100%), Xenopus Tropicalis (100%), Rabbit (100%), Rhesus Monkey (100%), Bovine (100%)
Protein Families:	Druggable Genome, Transcription Factors



[View online »](#)

Product images:



Sample (30 ug whole cell lysate). A:293T. 10% SDS PAGE. TA308593 diluted at 1:1000