

## Product datasheet for **TA308592**

### Iba1 (AIF1) Rabbit Polyclonal Antibody

#### Product data:

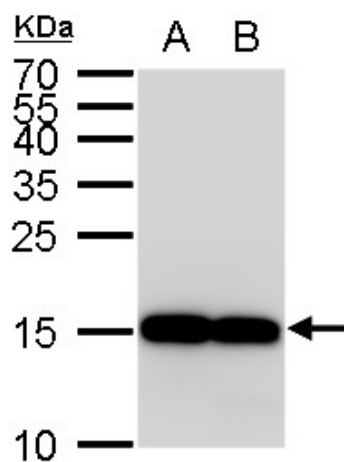
Product Type:	Primary Antibodies
Applications:	IHC, WB
Recommended Dilution:	IHC:1:100-1:1000; WB:1:500-1:3000
Reactivity:	Human (Predicted: Bovine, Pig, Rhesus Monkey)
Host:	Rabbit
Isotype:	IgG
Clonality:	Polyclonal
Immunogen:	Synthetic peptide corresponding to a region within amino acids 85 and 147 of Iba1 (Uniprot ID#P55008)
Formulation:	1XPBS, 1% BSA, 20% Glycerol (pH7). 0.025% ProClin 300 was added as a preservative.
Concentration:	lot specific
Purification:	Purified by antigen-affinity chromatography.
Conjugation:	Unconjugated
Storage:	Store at -20°C as received.
Stability:	Stable for 12 months from date of receipt.
Predicted Protein Size:	17 kDa
Gene Name:	allograft inflammatory factor 1
Database Link:	<a href="#">NP_004838</a> <a href="#">Entrez Gene 199 Human P55008</a>
Background:	This gene is induced by cytokines and interferon. Its protein product is thought to be involved in negative regulation of growth of vascular smooth muscle cells, which contributes to the anti-inflammatory response to vessel wall trauma. Three transcript variants encoding different isoforms have been found for this gene. [provided by RefSeq]
Synonyms:	AIF-1; IBA1; IRT-1; IRT1
Note:	Seq homology of immunogen across species: Pig (100%), Rhesus Monkey (100%), Bovine (92%)



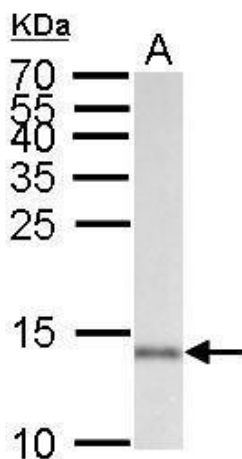
[View online »](#)

Protein Families: Druggable Genome

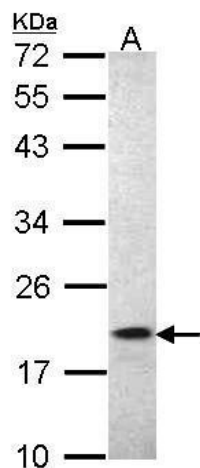
### Product images:



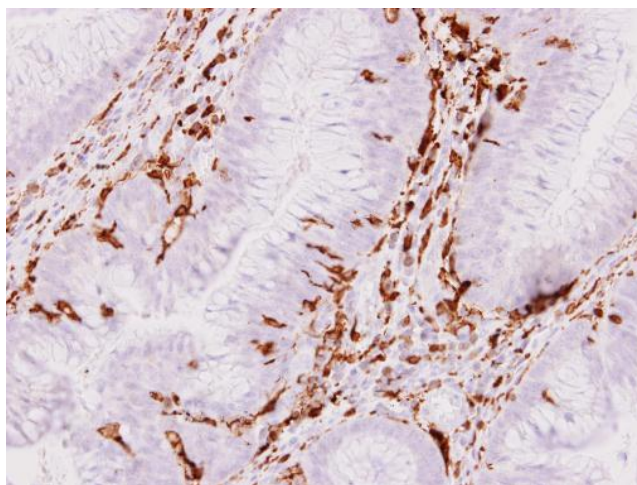
Iba1 antibody detects Iba1 protein by western blot analysis. A. 30 ug THP-1 whole cell lysate/extract. B. 30 ug HL-60 whole cell lysate/extract. 15 % SDS-PAGE. Iba1 antibody (TA308592) dilution: 1:1000



Iba1 antibody detects Iba1 protein by Western blot analysis. A. 50 ug mouse brain lysate/extract. 15 % SDS-PAGE. Iba1 antibody (TA308592) dilution: 1:1000



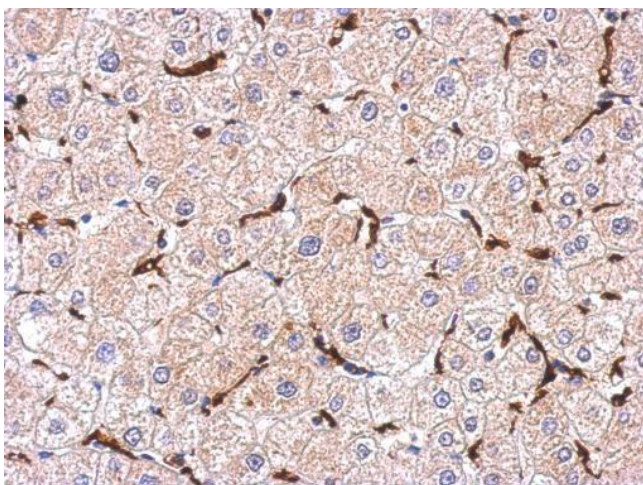
Sample (30 ug of whole cell lysate). A: Molt-4. 15% SDS PAGE. AIF1 antibody. TA308592 diluted at 1:1000.



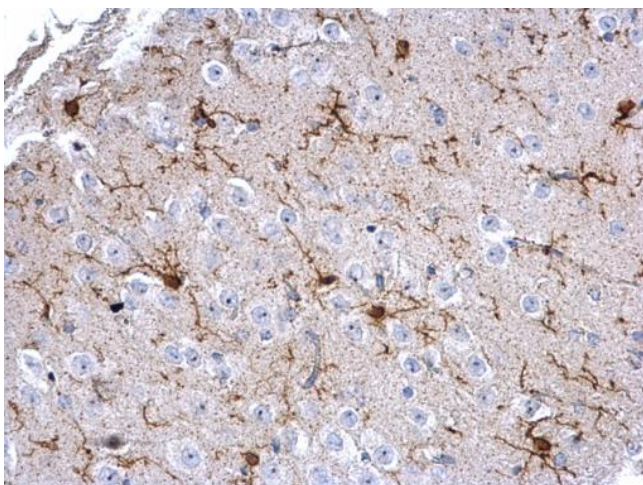
Iba1 antibody detects Iba1 protein at cytoplasm on colon carcinoma stroma by immunohistochemical analysis. Sample: Paraffin-embedded colon carcinoma stroma. Iba1 antibody (TA308592) dilution: 1:500.



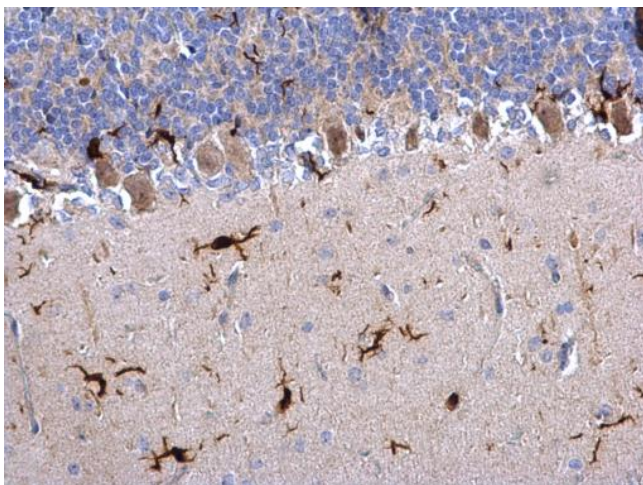
Iba1 detects Iba1 protein at cytosol on mouse brain tissue by immunohistochemical analysis. Sample: Paraffin-embedded mouse brain tissue. Iba1 (TA308592) dilution: 1:1000.



Immunohistochemical analysis of paraffin-embedded Hepatoma, using Iba1 (TA308592) antibody at 1:500 dilution.



Iba1 antibody detects Iba1 protein on mouse fore brain by immunohistochemical analysis. Sample: Paraffin-embedded mouse fore brain. Iba1 antibody (TA308592) dilution: 1:500.



Iba1 antibody detects Iba1 protein on rat hind brain by immunohistochemical analysis. Sample: Paraffin-embedded rat hind brain. Iba1 antibody (TA308592) dilution: 1:500.