

## Product datasheet for **TA308590**

### FBXL12 Rabbit Polyclonal Antibody

#### Product data:

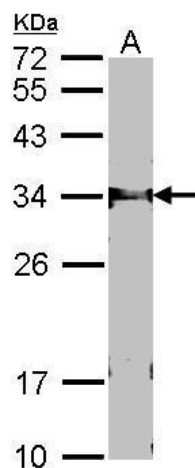
Product Type:	Primary Antibodies
Applications:	IHC, WB
Recommended Dilution:	IHC:1:100-1:1000; WB:1:500-1:3000
Reactivity:	Human, Mouse (Predicted: Rat, Bovine)
Host:	Rabbit
Isotype:	IgG
Clonality:	Polyclonal
Immunogen:	Synthetic peptide corresponding to a region within amino acids 265 and 326 of FBXL12 (Uniprot ID#Q9NXK8)
Formulation:	1XPBS, 10% Glycerol (pH7). 0.01% Thimerosal was added as a preservative.
Concentration:	lot specific
Purification:	Purified by antigen-affinity chromatography.
Conjugation:	Unconjugated
Storage:	Store at -20°C as received.
Stability:	Stable for 12 months from date of receipt.
Predicted Protein Size:	37 kDa
Gene Name:	F-box and leucine-rich repeat protein 12
Database Link:	<a href="#">NP_060173</a> <a href="#">Entrez Gene 30843 Mouse</a> <a href="#">Entrez Gene 313782 Rat</a> <a href="#">Entrez Gene 54850 Human</a> <a href="#">Q9NXK8</a>
Background:	Members of the F-box protein family, such as FBXL12, are characterized by an approximately 40-amino acid F-box motif. SCF complexes, formed by SKP1 (MIM 601434), cullin (see CUL1; MIM 603134), and F-box proteins, act as protein-ubiquitin ligases. F-box proteins interact with SKP1 through the F box, and they interact with ubiquitination targets through other protein interaction domains (Jin et al., 2004 [PubMed 15520277]). [supplied by OMIM]
Synonyms:	Fbl12
Note:	Seq homology of immunogen across species: Rat (100%), Bovine (92%)



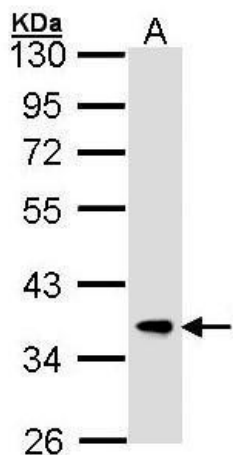
[View online »](#)

Protein Families: Druggable Genome

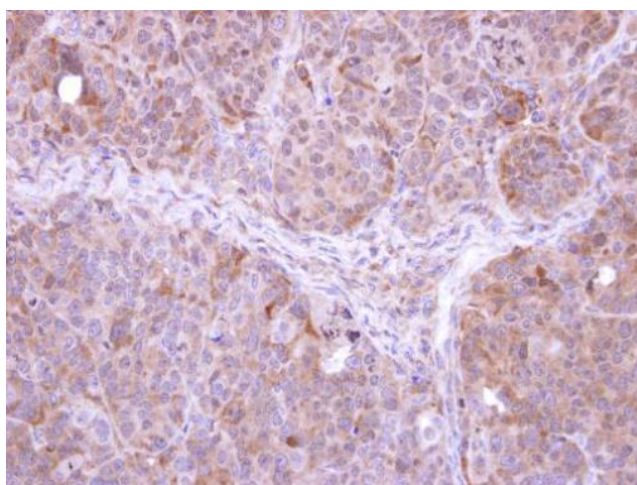
### Product images:



Sample (30 ug of whole cell lysate). A: NIH-3T3.  
12% SDS PAGE. FBXL12 antibody. TA308590  
diluted at 1:1000.



Sample (30 ug of whole cell lysate). A: Hep G2.  
10% SDS PAGE. TA308590 diluted at 1:1000



Immunohistochemical analysis of paraffin-embedded SW480 xenograft, using FBXL12 (TA308590) antibody at 1:500 dilution.