

Product datasheet for **TA308587**

BMPR2 Rabbit Polyclonal Antibody

Product data:

Product Type:	Primary Antibodies
Applications:	WB
Recommended Dilution:	WB:1:500-1:3000
Reactivity:	Human, Mouse (Predicted: Pig)
Host:	Rabbit
Isotype:	IgG
Clonality:	Polyclonal
Immunogen:	Recombinant fragment corresponding to a region within amino acids 667 and 951 of BMPR2 (Uniprot ID#Q13873)
Formulation:	1XPBS, 1% BSA, 20% Glycerol (pH7). 0.025% ProClin 300 was added as a preservative.
Concentration:	lot specific
Purification:	Purified by antigen-affinity chromatography.
Conjugation:	Unconjugated
Storage:	Store at -20°C as received.
Stability:	Stable for 12 months from date of receipt.
Predicted Protein Size:	115 kDa
Gene Name:	bone morphogenetic protein receptor type 2
Database Link:	NP_001195 Entrez Gene 12168 Mouse Entrez Gene 659 Human Q13873



[View online »](#)

Background:

This gene encodes a member of the bone morphogenetic protein (BMP) receptor family of transmembrane serine/threonine kinases. The ligands of this receptor are BMPs, which are members of the TGF-beta superfamily. BMPs are involved in endochondral bone formation and embryogenesis. These proteins transduce their signals through the formation of heteromeric complexes of two different types of serine (threonine) kinase receptors: type I receptors of about 50-55 kD and type II receptors of about 70-80 kD. Type II receptors bind ligands in the absence of type I receptors, but they require their respective type I receptors for signaling, whereas type I receptors require their respective type II receptors for ligand binding. Mutations in this gene have been associated with primary pulmonary hypertension, both familial and fenfluramine-associated, and with pulmonary venoocclusive disease. [provided by RefSeq]

Synonyms:

BMPR-II; BMPR3; BMR2; BRK-3; POVD1; PPH1; T-ALK

Note:

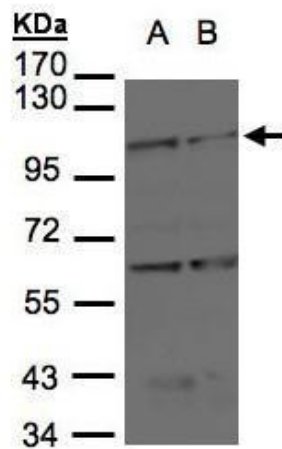
Seq homology of immunogen across species: Pig (92%)

Protein Families:

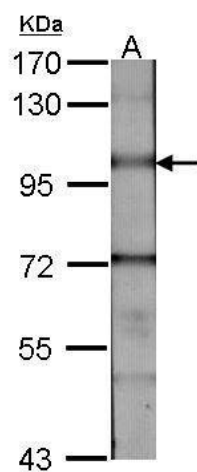
Druggable Genome, Protein Kinase, Transmembrane

Protein Pathways:

Cytokine-cytokine receptor interaction, TGF-beta signaling pathway

Product images:

Sample (30 ug of whole cell lysate). A:H1299.
B:Raji. 7.5% SDS PAGE. TA308587 diluted at
1:1000



Sample (30 ug of whole cell lysate). A:NIH-3T3.
7.5% SDS PAGE. TA308587 diluted at 1:1000.