

Product datasheet for **TA308586**

PDE6D Rabbit Polyclonal Antibody

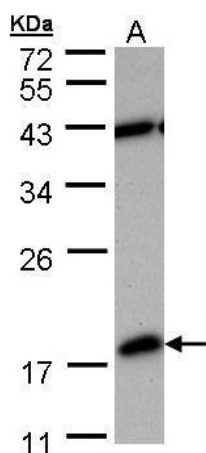
Product data:

Product Type:	Primary Antibodies
Applications:	IF, IHC, WB
Recommended Dilution:	ICC/IF:1:100-1:1000; IHC:1:100-1:1000; WB:1:500-1:3000
Reactivity:	Human (Predicted: Mouse, Dog, Monkey, Zebrafish, Bovine)
Host:	Rabbit
Isotype:	IgG
Clonality:	Polyclonal
Immunogen:	Recombinant fragment corresponding to a region within amino acids 1 and 150 of PDE6D (Uniprot ID#O43924)
Formulation:	0.1M Tris, 0.1M Glycine, 10% Glycerol (pH7). 0.01% Thimerosal was added as a preservative.
Purification:	Purified by antigen-affinity chromatography.
Conjugation:	Unconjugated
Storage:	Store at -20°C as received.
Stability:	Stable for 12 months from date of receipt.
Predicted Protein Size:	17 kDa
Gene Name:	phosphodiesterase 6D
Database Link:	NP_002592 Entrez Gene 18582 Mouse Entrez Gene 403781 Dog Entrez Gene 712629 Monkey Entrez Gene 5147 Human O43924
Synonyms:	JBTS22; PDED
Note:	Seq homology of immunogen across species: Mouse (98%), Dog (98%), Monkey (99%), Zebrafish (90%), Bovine (99%)
Protein Pathways:	Progesterone-mediated oocyte maturation, Purine metabolism

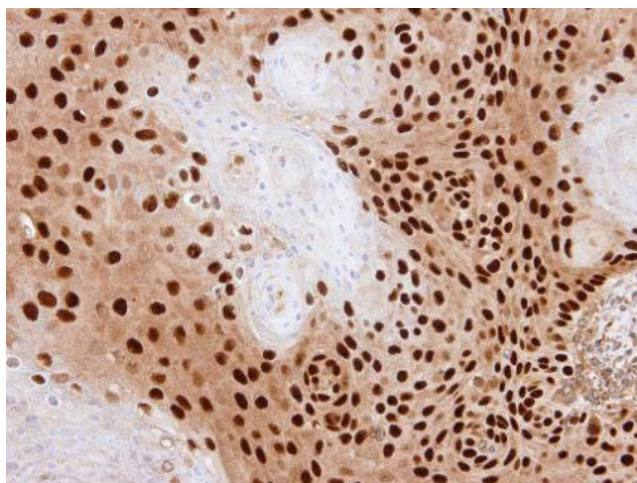


[View online »](#)

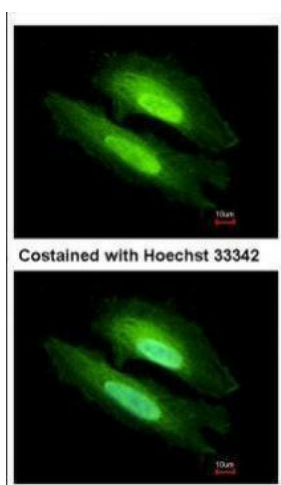
Product images:



Sample (30 ug of whole cell lysate). A: MOLT4.
12% SDS PAGE. TA308586 diluted at 1:1000



Immunohistochemical analysis of paraffin-
embedded SAS xenograft, using PDE6D
(TA308586) antibody at 1:500 dilution.



Immunofluorescence analysis of methanol-fixed HeLa, using PDE6D (TA308586) antibody at 1:500 dilution.